



CHRISTMAS  
*Collection*  
2024





Merry Christmas!

Wishing you a cozy and stunning Christmas filled with bangles, ornaments, and glittering decor.

With a touch of beautiful blue, silver, adorned with gold and shimmering decor.



WISHING YOU A VERY  
MERRY CHRISTMAS

Christmas 2024



Christmas

BAUBLES & ORNAMENTS

*page 12*

CHRISTMAS DECOR

*page 40*

VOTIVES & CANDLESTICKS

*page 62*

LANTERNS

*page 68*

TRAYS

*page 72*

CANDLES

*page 76*

EVERGREENS

*page 84*

CONTACT & SALES TERMS

*page 90*



# Christmas

As winter's chill settles in, heralding the arrival of the most magical season, we invite you to immerse yourself in the heartwarming ambiance of Christmas. Picture your home, transformed into a haven of warmth and joy, adorned with our meticulously curated Christmas decor.

Step into a world where twinkling lights dance like stars, casting a gentle glow that wraps every corner in a festive embrace. Our carefully chosen decorations, from timeless ornaments to intricately crafted wreaths, create a symphony of colors and textures that resonate with the spirit of the season.

The air is filled with the aroma of cinnamon and pine, inviting you to experience the cozy charm that Christmas brings. Picture gatherings with loved ones, surrounded by the comforting glow of candles and the soft rustle of rustic wreaths adorned with pine cones and berries. Our collection captures the essence of this cherished time, inviting you to create memories that linger long after the season fades.













# Christmas

WISHLIST







# Baubles & ornaments





CLEARENA BAUBLE  
Rose/Gold, Glass  
A00025313, 6 Pcs  
10X10X10 cm  
44



5 705764 826402



CLEARENA BAUBLE  
Rose/Gold, Glass  
A00025312, 6 Pcs  
8X8X8 cm



5 705764 826396



SELVIE ORNAMENT  
Powder/L. Gold, Glass  
A00012917, 12 Pcs  
8X8X8 cm



5 705764 762892



SELVIE BAUBLE  
Powder/L. Gold, Glass  
A00012907, 12 Pcs  
8X8X8 cm



5 705764 762793



NORILLE BAUBLE  
Powder, Glass  
A00011410, 12 Pcs  
10X10X11 cm



5 705764 748476



NORILLE BAUBLE  
Powder, Glass  
A00011411, 12 Pcs  
8X8X9 cm



5 705764 748483



NORILLE BAUBLE  
Powder, Glass  
A00011399, 12 Pcs  
10X10X11 cm



5 705764 748360



NORILLE BAUBLE  
Powder, Glass  
A00011400, 12 Pcs  
8X8X9 cm



5 705764 748377



NORIA BAUBLE  
Powder, Glass  
A00011552, 12 Pcs  
8X8X9 cm



5 705764 749893



NORIA BAUBLE  
Powder, Glass  
A00011551, 12 Pcs  
6X6X7 cm



5 705764 749886



VELVITIE BAUBLE  
Powder, Glass  
A00012867, 12 Pcs  
8X8X8 cm



5 705764 762397



VELVITIE BAUBLE  
Powder, Glass  
A00012535, 12 Pcs  
8X8X8 cm



5 705764 759076



SELLA BAUBLE  
Powder, Glass  
A00012905, 12 Pcs  
8X8X8 cm



5 705764 762779



SELLA BAUBLE  
Powder, Plastic  
A00011488, 12 Pcs  
8X8X8 cm



5 705764 749251



SELLA BAUBLE  
Powder, Plastic  
A00011524, 12 Pcs  
8X8X8 cm



5 705764 749619



CLARISSE BAUBLE  
D. Powder, Glass/PU  
A00012933, 6 Pcs  
10X10X10 cm



5 705764 763059



CLARISSE  
D. Powder, Glass/PU  
A00012927, 6 Pcs  
12X12X12 cm



5 705764 762991



GLOSSIA ORNAMENT  
Rose/Clear, Glass  
A00025360, 12 Pcs  
8X8X18.7 cm  
51



5 705764 826877



GLOSSIA ORNAMENT  
Rose/Clear, Glass  
A00025361, 12 Pcs  
7.5X7.5X21.5 cm  
51



5 705764 826884



CLARIE BAUBLE  
D. Powder, Glass/PU  
A00012935, 6 Pcs  
8X8X12 cm



5 705764 763073



CLARIE  
D. Powder, Glass/PU  
A00012959, 6 Pcs  
10X10X10 cm



5 705764 763318



CLARINNE  
Powder, Glass/PU  
A00012931, 6 Pcs  
10X10X10 cm



5 705764 763035



CLARINNE  
Powder, Glass/PU  
A00012928, 6 Pcs  
12X12X12 cm



5 705764 763004

Soft-hued  
Christmas baubles  
adorned with exquisite  
details, whispering  
tales of festive  
elegance and holiday  
enchantment.



NORILLE ORNAMENT  
Meerkat, Glass  
A00019936, 12 Pcs  
7.5X7.5X10 cm



5 705764 769341



NORILLE ORNAMENT  
Meerkat, Glass  
A00019935, 12 Pcs  
6X6X12 cm



5 705764 769334



NORILLE ORNAMENT  
Meerkat, Glass  
A00019937, 12 Pcs  
6.5X6.5X16 cm



5 705764 769358



NORILLE BAUBLE  
Meerkat, Glass  
A00019940, 12 Pcs  
8X8X8 cm



5 705764 769389



NORILLE BAUBLE  
Meerkat, Glass  
A00019941, 12 Pcs  
10X10X10 cm



5 705764 769396



NORILLE BAUBLE  
Meerkat, Glass  
A00019938, 12 Pcs  
8X8X8 cm



5 705764 769365



NORILLE BAUBLE  
Meerkat, Glass  
A00019939, 12 Pcs  
10X10X10 cm



5 705764 769372







CADELIA BAUBLE  
Rose Smoke, Glass  
A00020035, 6 Pcs  
6X6X6 cm



CADELIA BAUBLE  
Rose Smoke, Glass  
A00020036, 6 Pcs  
8X8X8 cm



CADELIA BAUBLE  
Rose Smoke, Glass  
A00020051, 6 Pcs  
6X6X6 cm



CADELIA BAUBLE  
Rose Smoke, Glass  
A00020050, 6 Pcs  
8X8X8 cm



NORIA BAUBLE  
L. Brown, Glass  
A00011549, 6 Pcs  
6X6X7 cm



NORIA BAUBLE  
L. Brown, Glass  
A00011550, 12 Pcs  
8X8X9 cm



GLITTERIA ORNAMENT  
L. Gold, Glass  
A00012952, 12 Pcs  
8X8X14 cm



GLITTERIA ORNAMENT  
L. Gold, Glass  
A00012954, 12 Pcs  
10X10X17 cm



NOSILLE ORNAMENT  
Silver/Gold, Glass  
A00019901, 12 Pcs  
8X8X8 cm



NOSILLE ORNAMENT  
Silver/Gold, Glass  
A00019910, 12 Pcs  
10X10X10 cm



NOSILLE ORNAMENT  
Silver/Gold, Glass  
A00019898, 12 Pcs  
6X8X12 cm



NOSILLE ORNAMENT  
Silver/Gold, Glass  
A00019907, 12 Pcs  
8X8X15 cm



*Nosille baubles, elegant and majestic ornaments for your Christmas decor*



NOSILLE BAUBLE  
Silver/Gold, Glass  
A00019904, 12 Pcs  
8X8X8 cm



NOSILLE BAUBLE  
Silver/Gold, Glass  
A00019913, 12 Pcs  
10X10X10 cm







GENUINE BAUBLE  
Clear/L. Gold, Glass  
A00012523, 6 Pcs  
5.5X5.5X10.5 cm



GENUINE BAUBLE  
Clear/L. Gold, Glass  
A00012520, 6 Pcs  
8X8X14 cm



GENUINE ORNAMENT  
Clear/L. Gold, Glass  
A00012521, 6 Pcs  
4X4X14.5 cm



GENUINE ORNAMENT  
Clear/L. Gold, Glass  
A00012522, 6 Pcs  
4X4X14 cm



CADELIA BAUBLE  
White, Glass  
A00020037, 6 Pcs  
6X6X6 cm



CADELIA BAUBLE  
White, Glass  
A00020038, 6 Pcs  
8X8X8 cm



CADELIA BAUBLE  
White, Glass  
A00020048, 6 Pcs  
6X6X6 cm



CADELIA BAUBLE  
White, Glass  
A00020052, 6 Pcs  
8X8X8 cm



SELLA BAUBLE  
Off White, Plastic  
A00010520, 12 Pcs  
8X8X8 cm



SELLA BAUBLE  
Off White, Plastic  
A00010523, 12 Pcs  
8X8X8 cm



CLEARENA BAUBLE  
Off White/Gold, Glass  
A00025318, 6 Pcs  
8X8X8 cm



CLEARENA BAUBLE  
Off White/Gold, Glass  
A00025319, 6 Pcs  
10X10X10 cm



44



NAVINA BAUBLE  
Wh./L. Gold, Glass  
A00019917, 12 Pcs  
8X8X8 cm



NAVINA BAUBLE  
Wh./L. Gold, Glass  
A00019918, 12 Pcs  
8X8X8 cm



NAVINA ORNAMENT  
Wh./L. Gold, Glass  
A00019916, 12 Pcs  
8X8X8 cm



NAVINA ORNAMENT  
Wh./L. Gold, Glass  
A00019915, 12 Pcs  
6.5X6.5X12 cm





NORILLE BAUBLE  
Off White, Glass  
A00010555, 12 Pcs  
10X10X11 cm



5 705764 724708



NORILLE BAUBLE  
Off White, Glass  
A00010556, 12 Pcs  
8X8X9 cm



5 705764 724715



NORILLE BAUBLE  
Off White, Glass  
A00011185, 12 Pcs  
10X10X11 cm



5 705764 746229



NORILLE BAUBLE  
Off White, Glass  
A00011186, 12 Pcs  
8X8X9 cm



5 705764 746236



CRISTELLE ORNAMENT  
White, Glass  
A00012811, 6 Pcs  
11X11X18 cm



5 705764 761833



NORILLE ORNAMENT  
Off White, Glass  
A00010543, 12 Pcs  
6.5X6.5X16 cm



5 705764 724586



NORILLE ORNAMENT  
Off White, Glass  
A00010544, 12 Pcs  
5.5X5.5X12 cm



5 705764 724593



NORILLE PINE CONE  
Off White, Glass  
A00011376, 12 Pcs  
7.5X7.5X10 cm



5 705764 748131



GLITTERIA ORNAMENT  
Silver, Glass  
A00012953, 12 Pcs  
10X10X17 cm



5 705764 763257



GLITTERIA ORNAMENT  
Silver, Glass  
A00012951, 12 Pcs  
8X8X14 cm



5 705764 763233



GLITTERIA ORNAMENT  
Silver, Glass  
A00012949, 12 Pcs  
8X8X10 cm



5 705764 763219



GLITTERIA BAUBLE  
Silver, Glass  
A00012947, 12 Pcs  
8X8X10 cm



5 705764 763196



NAVINA ORNAMENT  
Wh./Silver, Glass  
A00019922, 12 Pcs  
6.5X6.5X12 cm



5 705764 769204



NAVINA ORNAMENT  
Wh./Silver, Glass  
A00019921, 12 Pcs  
8X8X8 cm



5 705764 769198



NAVINA BAUBLE  
Wh./Silver, Glass  
A00019919, 12 Pcs  
8X8X8 cm



5 705764 769174



NAVINA BAUBLE  
Wh./Silver, Glass  
A00019920, 12 Pcs  
8X8X8 cm



5 705764 769181





GLOSSIA ORNAMENT  
White/Clear, Glass  
A00025358, 12 Pcs  
7.5X7.5X21.5 cm  
51



5 705764 826853



GLOSSIA ORNAMENT  
White/Clear, Glass  
A00025357, 12 Pcs  
8X8X18.7 cm  
51



5 705764 826846



STRIBILLE ORNAMENT  
Silver/White, Glass  
A00025343, 6 Pcs  
7X7X16.1 cm



5 705764 826709



STRIBILLE ORNAMENT  
Silver/White, Glass  
A00025341, 6 Pcs  
7X7X13.7 cm



5 705764 826686



NORILLE ORNAMENT  
White, Glass  
A00012957, 12 Pcs  
6.5X6.5X16 cm



5 705764 763295



NORILLE ORNAMENT  
White, Glass  
A00012958, 12 Pcs  
5.5X5.5X12 cm



5 705764 763301



NORILIA BAUBLE  
White, Glass  
A00012956, 12 Pcs  
8X8X9 cm



5 705764 763288



NORILIA BAUBLE  
White, Glass  
A00012955, 12 Pcs  
6X6X7 cm



5 705764 763271



GENUINE ORNAMENT  
Clear, Glass  
A00012517, 6 Pcs  
4.5X4.5X19.5 cm



5 705764 758895



GENUINE ORNAMENT  
Clear, Glass  
A00012519, 6 Pcs  
5X5X17.5 cm



5 705764 758918



GENUINE BAUBLE  
Clear, Glass  
A00012516, 6 Pcs  
8X8X15.5 cm



5 705764 758888



GENUINE BAUBLE  
Clear, Glass  
A00012518, 6 Pcs  
6X6X14 cm



5 705764 758901



GENUINE ORNAMENT  
Clear/Silver, Glass  
A00012525, 6 Pcs  
5X5X15.5 cm



5 705764 758970



GENUINE ORNAMENT  
Clear/Silver, Glass  
A00012526, 6 Pcs  
4X4X14.5 cm



5 705764 758987



GENUINE BAUBLE  
Clear/Silver, Glass  
A00012527, 6 Pcs  
8X8X14 cm



5 705764 758994



GENUINE BAUBLE  
Clear/Silver, Glass  
A00012524, 6 Pcs  
6X6X12 cm



5 705764 758963



CADELIA BAUBLE  
Clear, Glass  
A00020039, 6 Pcs  
6X6X6 cm



CADELIA BAUBLE  
Clear/Silver, Glass  
A00020040, 6 Pcs  
8X8X8 cm



CADELIA BAUBLE  
Clear/Silver, Glass  
A00020049, 6 Pcs  
6X6X6 cm



CADELIA BAUBLE  
Clear/Silver, Glass  
A00020047, 6 Pcs  
8X8X8 cm



NOLIA ORNAMENT  
White, Glass  
A00012809, 12 Pcs  
6X6X13 cm



FAYE ORNAMENT  
White, Glass  
A00012857, 12 Pcs  
6.5X6.5X14 cm



NORIA ORNAMENT  
White, Glass  
A00012812, 4 Pcs  
10X10X25.5 cm



NORIA ORNAMENT  
White, Glass  
A00012813, 4 Pcs  
10X10X35 cm



CLARIE BAUBLE  
D. Grey, Glass/PU  
A00012934, 6 Pcs  
8X8X12 cm



CLARIE  
D. Grey, Glass/PU  
A00012960, 6 Pcs  
10X10X10 cm



NORIA ORNAMENT  
D. Grey, Glass  
A00012814, 4 Pcs  
10X10X25.5 cm



NORIA ORNAMENT  
D. Grey, Glass  
A00012815, 4 Pcs  
10X10X35 cm



CLARINNE  
D. Grey, Glass/PU  
A00012930, 6 Pcs  
10X10X10 cm



CLARINNE  
D. Grey, Glass/PU  
A00012929, 6 Pcs  
12X12X12 cm



VELVITIE BAUBLE  
D. Grey, Glass  
A00012866, 12 Pcs  
8X8X8 cm



NOLIA ORNAMENT  
D. Grey, Glass  
A00012839, 12 Pcs  
6X6X13 cm







SELVIE ORNAMENT  
White/Silver, Glass  
A00012916, 12 Pcs  
8X8X8 cm



5 705764 762885



SELVIE BAUBLE  
White/Silver, Glass  
A00012906, 12 Pcs  
8X8X8 cm



5 705764 762786



NORIA BAUBLE  
Grey, Glass  
A00012800, 12 Pcs  
8X8X9 cm



5 705764 761727



NORIA BAUBLE  
Grey, Glass  
A00012801, 12 Pcs  
6X6X7 cm



5 705764 761734



CADELIA BAUBLE  
D. Grey, Glass  
A00020034, 6 Pcs  
8X8X8 cm



5 705764 770323



CADELIA BAUBLE  
D. Grey, Glass  
A00020033, 6 Pcs  
6X6X6 cm



5 705764 770316



CADELIA BAUBLE  
D. Grey, Glass  
A00020043, 6 Pcs  
8X8X8 cm



5 705764 770415



CADELIA BAUBLE  
D. Grey, Glass  
A00020044, 6 Pcs  
6X6X6 cm



5 705764 770422



NAVINA ORNAMENT  
D. Grey/L. Gold, Glass  
A00019930, 12 Pcs  
6.5X6.5X12 cm



5 705764 769280



NAVINA ORNAMENT  
D. Grey/L. Gold, Glass  
A00019929, 12 Pcs  
8X8X8 cm



5 705764 769273



NAVINA BAUBLE  
D. Grey/L. Gold, Glass  
A00019927, 12 Pcs  
8X8X8 cm



5 705764 769259



NAVINA BAUBLE  
D. Grey/L. Gold, Glass  
A00019928, 12 Pcs  
8X8X8 cm



5 705764 769266



NORILLE BAUBLE  
D. Grey, Glass  
A00010554, 12 Pcs  
10X10X11 cm



5 705764 724692



NORILLE BAUBLE  
D. Grey, Glass  
A00010553, 12 Pcs  
8X8X9 cm



5 705764 724685



NORILLE BAUBLE  
D. Grey, Glass  
A00010551, 12 Pcs  
10X10X11 cm



5 705764 724661



NORILLE BAUBLE  
D. Grey, Glass  
A00010552, 12 Pcs  
8X8X9 cm



5 705764 724678



NORILLE ORNAMENT  
D. Grey, Glass  
A00010542, 12 Pcs  
5.5X5.5X12 cm



5 705764 724579



NORILLE ORNAMENT  
D. Grey, Glass  
A00010541, 12 Pcs  
6.5X6.5X16 cm



5 705764 724562



NORILLE ORNAMENT  
Ant. Brown, Glass  
A00011562, 12 Pcs  
6X6X12 cm



5 705764 749992



NORILLE ORNAMENT  
Ant. Brown, Glass  
A00011561, 12 Pcs  
6.5X6.5X16 cm



5 705764 749985



NORILLE PINE CONE  
Ant. Brown, Glass  
A00011375, 12 Pcs  
7.5X7.5X10 cm



5 705764 748124



NORILLE BAUBLE  
Ant. Brown, Glass  
A00011392, 12 Pcs  
8X8X9 cm



5 705764 748292



NORILLE BAUBLE  
Ant. Brown, Glass  
A00011391, 12 Pcs  
10X10X11 cm



5 705764 748285



NORILLE BAUBLE  
Ant. Brown, Glass  
A00011394, 12 Pcs  
8X8X9 cm



5 705764 748315



NORILLE BAUBLE  
Ant. Brown, Glass  
A00011393, 12 Pcs  
10X10X11 cm



5 705764 748308



CLEARENA BAUBLE  
D. Green/Gold, Glass  
A00025316, 6 Pcs  
8X8X8 cm



5 705764 826433



CLEARENA BAUBLE  
D. Green/Gold, Glass  
A00025317, 6 Pcs  
10X10X10 cm  
44



5 705764 826440



NOELLE BAUBLE  
Rose/D. Green/Off White, Glass  
A00025310, 12 Pcs  
8X8X8 cm



5 705764 826372



NOELLE BAUBLE  
Rose/D. Green/Off White, Glass  
A00025311, 12 Pcs  
10X10X10 cm  
44



5 705764 826389



NORILLE BAUBLE  
Dusty Green, Glass  
A00012836, 12 Pcs  
8X8X9 cm



5 705764 762083



NORILLE BAUBLE  
Dusty Green, Glass  
A00012835, 12 Pcs  
10X10X11 cm



5 705764 762076



NORILLE BAUBLE  
Dusty Green, Glass  
A00012834, 12 Pcs  
8X8X9 cm



5 705764 762069



NORILLE BAUBLE  
Dusty Green, Glass  
A00012833, 12 Pcs  
10X10X11 cm



5 705764 762052







STRIBILLE ORNAMENT  
Silver/Green, Glass  
A00025340, 6 Pcs  
7X7X16.1 cm



5 705764 826679



STRIBILLE ORNAMENT  
Silver/Green, Glass  
A00025338, 6 Pcs  
7X7X13.7 cm



5 705764 826655



NORILLE ORNAMENT  
Dusty Green, Glass  
A00012699, 12 Pcs  
6.5X6.5X16 cm



5 705764 760713



NORILLE ORNAMENT  
Dusty Green, Glass  
A00012700, 12 Pcs  
5.5X5.5X12 cm



5 705764 760720



NORILLE PINE CONE  
Dusty Green, Glass  
A00012841, 12 Pcs  
7.5X7.5X10 cm



5 705764 762137



GLOSSIA ORNAMENT  
Green/Clear, Glass  
A00025349, 12 Pcs  
7.5X7.5X21.5 cm  
51



5 705764 826761



GLOSSIA ORNAMENT  
Green/Clear, Glass  
A00025348, 12 Pcs  
8X8X18.7 cm  
51



5 705764 826754



CLARISSE  
D. Green, Glass/PU  
A00012961, 6 Pcs  
12X12X12 cm



5 705764 763332



CLARISSE BAUBLE  
D. Green, Glass/PU  
A00012611, 6 Pcs  
10X10X10 cm



5 705764 759830



CLARINNE  
Dusty Green, Glass/PU  
A00012613, 6 Pcs  
12X12X12 cm



5 705764 759854



CLARINNE  
Dusty Green, Glass/PU  
A00012612, 6 Pcs  
10X10X10 cm



5 705764 759847



CLARIE BAUBLE  
D. Green, Glass/PU  
A00012608, 6 Pcs  
8X8X12 cm



5 705764 759809



CLARIE  
D. Green, Glass/PU  
A00012610, 6 Pcs  
10X10X10 cm



5 705764 759823



CADELIA BAUBLE  
D. Green, Glass  
A00020030, 6 Pcs  
8X8X8 cm



5 705764 770286



CADELIA BAUBLE  
D. Green, Glass  
A00020029, 6 Pcs  
6X6X6 cm



5 705764 770279



CADELIA BAUBLE  
D. Green, Glass  
A00020041, 6 Pcs  
8X8X8 cm



5 705764 770392



CADELIA BAUBLE  
D. Green, Glass  
A00020042, 6 Pcs  
6X6X6 cm



5 705764 770408



STRIBILLE ORNAMENT  
Silver/D. Blue, Glass  
A00025332, 6 Pcs  
7X7X13,7 cm



5 705764 826594



STRIBILLE ORNAMENT  
Silver/D. Blue, Glass  
A00025334, 6 Pcs  
7X7X16.1 cm



5 705764 826617



NOSILLE ORNAMENT  
D. Blue, Glass  
A00025328, 12 Pcs  
10X10X10 cm



5 705764 826556



NOSILLE ORNAMENT  
D. Blue, Glass  
A00025330, 12 Pcs  
6X6X12 cm



5 705764 826570



NOSILLE BAUBLE  
D. Blue, Glass  
A00025329, 12 Pcs  
8X8X8 cm



5 705764 826563



NOSILLE BAUBLE  
D. Blue, Glass  
A00025326, 12 Pcs  
10X10X10 cm



5 705764 826532



CLEARENA BAUBLE  
D. Blue/Gold, Glass  
A00025314, 6 Pcs  
8X8X8 cm



5 705764 826419



CLEARENA BAUBLE  
D. Blue/Gold, Glass  
A00025315, 6 Pcs  
10X10X10 cm



5 705764 826426





NORILLE BAUBLE  
Pomegranate, Glass  
A00010550, 12 Pcs  
8X8X9 cm



5 705764 724654



NORILLE BAUBLE  
Pomegranate, Glass  
A00010549, 12 Pcs  
10X10X11 cm



5 705764 724647



NORILLE BAUBLE  
Pomegranate, Glass  
A00011184, 12 Pcs  
8X8X9 cm



5 705764 746212



NORILLE BAUBLE  
Pomegranate, Glass  
A00011183, 12 Pcs  
10X10X11 cm



5 705764 746205



NORILLE PINE CONE  
Pomegranate, Glass  
A00011382, 12 Pcs  
7.5X7.5X10 cm



5 705764 748193



NORILLE ORNAMENT  
Pomegranate, Glass  
A00010539, 12 Pcs  
5.5X5.5X12 cm



5 705764 724548



NORILLE ORNAMENT  
Pomegranate, Glass  
A00010540, 12 Pcs  
6.5X6.5X16 cm



5 705764 724555



NOSILLE BAUBLE  
Pomegranate, Glass  
A00019902, 12 Pcs  
8X8X8 cm



5 705764 769006



NOSILLE ORNAMENT  
Pomegranate, Glass  
A00019899, 12 Pcs  
8X8X8 cm



5 705764 768979



NOSILLE ORNAMENT  
Pomegranate, Glass  
A00019896, 12 Pcs  
6X6X12 cm



5 705764 768948



NOSILLE BAUBLE  
Pomegranate, Glass  
A00019911, 12 Pcs  
10X10X10 cm



5 705764 769099



NOSILLE ORNAMENT  
Pomegranate, Glass  
A00019908, 12 Pcs  
10X10X10 cm



5 705764 769068



NOSILLE ORNAMENT  
Pomegranate, Glass  
A00019905, 12 Pcs  
8X8X15 cm



5 705764 769037





STRIBILLE ORNAMENT  
Silver/D. Red, Glass  
A00025346, 6 Pcs  
7X7X16.1 cm



5 705764 826730



STRIBILLE ORNAMENT  
Silver/D. Red, Glass  
A00025344, 6 Pcs  
7X7X13.7 cm



5 705764 826716



NOELLE BAUBLE  
D. Red/D. Green/Off White, Glass  
A00025309, 12 Pcs  
10X10X10 cm



5 705764 826363



NOELLE BAUBLE  
D. Red/D. Green/Off White, Glass  
A00025308, 12 Pcs  
8X8X8 cm



5 705764 826358



NAVINA ORNAMENT  
Pom./L. Gold, Glass  
A00019931, 12 Pcs  
6.5X6.5X12 cm



5 705764 769297



NAVINA ORNAMENT  
Pom./L. Gold, Glass  
A00019934, 12 Pcs  
8X8X8 cm



5 705764 769327



NAVINA BAUBLE  
Pom./L. Gold, Glass  
A00019932, 12 Pcs  
8X8X8 cm



5 705764 769303



NAVINA BAUBLE  
Pom./L. Gold, Glass  
A00019933, 12 Pcs  
8X8X8 cm



5 705764 769310



CADELIA BAUBLE  
Pomegranate, Glass  
A00020045, 6 Pcs  
8X8X8 cm



5 705764 770439



CADELIA BAUBLE  
Pomegranate, Glass  
A00020046, 6 Pcs  
6X6X6 cm



5 705764 770446



CADELIA BAUBLE  
Pomegranate, Glass  
A00020031, 6 Pcs  
6X6X6 cm



5 705764 770293



NORIA BAUBLE  
Pomegranate, Glass  
A00011498, 12 Pcs  
8X8X9 cm



5 705764 749350



NORIA BAUBLE  
Pomegranate, Glass  
A00011497, 12 Pcs  
6X6X7 cm



5 705764 749343



ALANA ORNAMENT  
L. Gold/Rose, Polyresin  
A00025469, 12 Pcs  
4X4X12,5 cm



ALANA ORNAMENT  
L. Gold, Polyresin  
A00025471, 12 Pcs  
4X4X12,5 cm



ALANA ORNAMENT  
L. Gold/D. Green, Polyresin  
A00025470, 12 Pcs  
4X4X12,5 cm



ALANA ORNAMENT  
D. Green/Ant. Silver, Polyresin  
A00025472, 12 Pcs  
4X4X12,5 cm



SEBINA ORNAMENT  
White/L. Gold, Polyresin  
A00025542, 6 Pcs  
5.8X7.1X6.9 cm



SEBINA ORNAMENT  
White/L. Gold, Polyresin  
A00025541, 6 Pcs  
7.2X4.8X11.4 cm



SEBINA ORNAMENT  
Ant. L. Gold, Polyresin  
A00025537, 6 Pcs  
5.8X7.1X6.9 cm



SEBINA ORNAMENT  
Ant. L. Gold, Polyresin  
A00025539, 6 Pcs  
7.2X4.8X11.4 cm



GLITTA APPLE  
L. Gold, Plastic  
A00012920, 12 Pcs  
7X7X8 cm



SEGILLA GOOSE  
Ant. L. Gold, Polyresin  
A00019955, 6 Pcs  
7.5X4.2X11.5 cm



MISSIA MISTLE TOE  
L. Gold, Iron  
A00012639, 6 Pcs  
10X7X10 cm



MISSIA BAUBLE  
L. Gold, Metal  
A00025390, 6 Pcs  
12X12X12 cm



MISSIA BELL  
L. Gold, Iron  
A00020008, 12 Pcs  
3.5X3.5X8 cm



MISSIA BELL  
L. Gold, Iron  
A00020010, 12 Pcs  
5X5X10 cm



MISSIA BELL  
L. Gold, Iron  
A00020007, 6 Pcs  
6.5X6.5X14 cm



SELLA PINE CONE  
L. Gold, Polyresin  
A00011361, 12 Pcs  
2.5X2.5X9 cm







SEGILLA GOOSE  
White, Polyresin  
A00019953, 6 Pcs  
7.5X4.2X11.5 cm



SELLA PINE CONE  
Silver, Polyresin  
A00011363, 12 Pcs  
2.5X2.5X9 cm



GLITTA APPLE  
Silver, Plastic  
A00012922, 12 Pcs  
7X7X8 cm



CRISTELLE ORNAMENT  
White, Glass  
A00012846, 12 Pcs  
1X1X13.5 cm



CRISTELLE ORNAMENT  
White, Glass  
A00012847, 12 Pcs  
1X1X24 cm



SEGILLA GOOSE  
Ant. Silver, Polyresin  
A00019954, 6 Pcs  
7.5X4.2X11.5 cm



MISSIA BELL  
Silver, Iron  
A00020009, 12 Pcs  
3.5X3.5X8 cm



MISSIA BELL  
Silver, Iron  
A00020011, 12 Pcs  
5X5X10 cm



MISSIA BELL  
Silver, Iron  
A00020012, 6 Pcs  
6.5X6.5X14 cm



MISSIA MISTLE TOE  
Silver, Iron  
A00012638, 4 Pcs  
10X7X10 cm



MISSIA BAUBLE  
Silver, Metal  
A00025391, 6 Pcs  
12X12X12 cm



ELINA ORNAMENT  
Linen, Marble  
A00025581, 4 Pcs  
6.5X6.5X1.5 cm



ELINA ORNAMENT  
Linen, Marble  
A00025582, 4 Pcs  
10X10X1.5 cm



ELINA ORNAMENT  
Brown, Marble  
A00025579, 4 Pcs  
6.5X6.5X1.5 cm



ELINA ORNAMENT  
Brown, Marble  
A00025580, 4 Pcs  
10X10X1.5 cm



ELINA ORNAMENT  
Green, Marble  
A00025577, 4 Pcs  
6.5X6.5X1.5 cm



ELINA ORNAMENT  
Green, Marble  
A00025578, 4 Pcs  
10X10X1.5 cm





PAPPIA STAR  
D. Grey, Paper  
A00019832, 6 Pcs  
40X9X40 cm



PAPPIA STAR  
D. Grey, Paper  
A00019838, 6 Pcs  
30X7X30 cm



*Crafted with festive  
magic, paper stars twinkle,  
turning any space into  
a winter wonderland of  
Christmas cheer.*



PAPELLE SNOWFLAKE  
Black, Paper  
A00019826, 6 Pcs  
30X5.7X30 cm



PAPELLE SNOWFLAKE  
Black, Paper  
A00019887, 6 Pcs  
30X5.2X30 cm



PAPELLE SNOWFLAKE  
D. Grey, Paper  
A00019885, 6 Pcs  
30X6.7X30 cm



PAPPIA STAR  
Pomegranate, Paper  
A00019828, 6 Pcs  
40X9X40 cm



PAPPIA STAR  
Pomegranate, Paper  
A00019834, 6 Pcs  
30X7X30 cm



PAPELLE SNOWFLAKE  
Pomegranate, Paper  
A00019883, 6 Pcs  
30X6.7X30 cm



PAPPIA STAR  
D. Green, Paper  
A00019830, 6 Pcs  
40X9X40 cm



PAPPIA STAR  
D. Green, Paper  
A00019836, 6 Pcs  
30X7X30 cm







PAPPIA STAR  
Meerkat, Paper  
A00019827, 6 Pcs  
40X9X40 cm



5 705764 768252



PAPPIA STAR  
Meerkat, Paper  
A00019833, 6 Pcs  
30X7X30 cm



5 705764 768313



PAPPIA STAR  
Rose Smoke, Paper  
A00019831, 6 Pcs  
40X9X40 cm



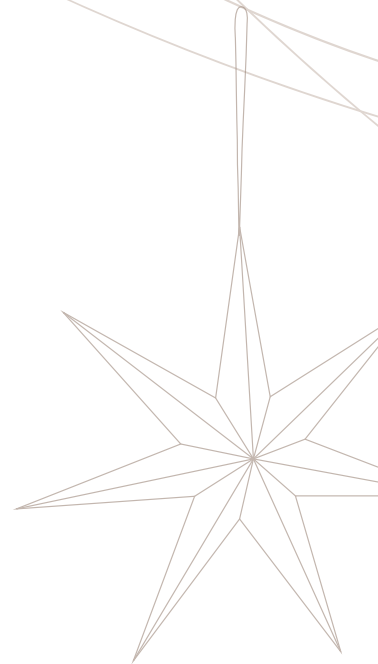
5 705764 768290



PAPPIA STAR  
Rose Smoke, Paper  
A00019837, 6 Pcs  
30X7X30 cm



5 705764 768351



PAPPIA STAR  
White, Paper  
A00019829, 6 Pcs  
40X9X40 cm



5 705764 768276



AVESIA FEATHER WREATH  
White, Feather  
A00025295, 4 Pcs  
45X45X9 cm



5 705764 826228



AVESIA FEATHER WREATH  
White, Feather  
A00025296, 4 Pcs  
36X36X9 cm



5 705764 826235



PASELLE SNOWFLAKE  
Meerkat, Paper  
A00019882, 6 Pcs  
30X6.7X30 cm



5 705764 768801



PASELLE SNOWFLAKE  
Meerkat, Paper  
A00019879, 6 Pcs  
30.7X7.5X30.7 cm



5 705764 768771

*Gentle hues adorn paper stars, casting a subtle glow, weaving tranquility into your Christmas decor with a touch of soft elegance*



PAPPIA ORNAMENT  
Meerkat, Paper  
A00019869, 12 Pcs  
9X9X12 cm



PAPPIA ORNAMENT  
Meerkat, Paper  
A00019874, 12 Pcs  
9X9X15 cm



PAPPIA ORNAMENT  
Meerkat, Paper  
A00019859, 12 Pcs  
10X10X12 cm



PAPPIA ORNAMENT  
Meerkat, Paper  
A00019864, 12 Pcs  
11X11X13 cm



PAPPIA ORNAMENT  
Meerkat, Paper  
A00019854, 12 Pcs  
10X10X15 cm



PAPPIA ORNAMENT  
Rose Smoke, Paper  
A00019873, 12 Pcs  
9X9X12 cm



PAPPIA ORNAMENT  
Rose Smoke, Paper  
A00019878, 12 Pcs  
9X9X15 cm



PAPPIA ORNAMENT  
Rose Smoke, Paper  
A00019863, 12 Pcs  
10X10X12 cm



PAPPIA ORNAMENT  
Rose Smoke, Paper  
A00019868, 12 Pcs  
11X11X13 cm



PAPPIA ORNAMENT  
Rose Smoke, Paper  
A00019858, 12 Pcs  
10X10X15 cm



PAPPIA ORNAMENT  
White, Paper  
A00019866, 12 Pcs  
11X11X13 cm



PAPPIA ORNAMENT  
White, Paper  
A00019876, 12 Pcs  
9X9X15 cm



PAPPIA ORNAMENT  
Pomegranate, Paper  
A00019860, 12 Pcs  
10X10X12 cm



PAPPIA ORNAMENT  
Pomegranate, Paper  
A00019865, 12 Pcs  
11X11X13 cm



PAPPIA ORNAMENT  
Pomegranate, Paper  
A00019875, 12 Pcs  
9X9X15 cm



PAPPIA ORNAMENT  
D. Green, Paper  
A00019872, 12 Pcs  
9X9X12 cm



PAPPIA ORNAMENT  
D. Green, Paper  
A00019877, 12 Pcs  
9X9X15 cm



PAPPIA ORNAMENT  
D. Green, Paper  
A00019862, 12 Pcs  
10X10X12 cm



PAPPIA ORNAMENT  
D. Green, Paper  
A00019867, 12 Pcs  
11X11X13 cm







# Christmas decor





GRACIE PINE CONE DECORATION  
Ant. L. Gold, Polyresin  
A00025509, 4 Pcs  
16.5X16.5X40.2 cm



GRACIE PINE CONE DECORATION  
Ant. L. Gold, Polyresin  
A00025508, 4 Pcs  
15.5X15.5X35.5 cm



GRACIE TREE  
Ant. L. Gold, Polyresin  
A00025517, 4 Pcs  
10.5X10.5X34 cm



GRACIE TREE  
Ant. L. Gold Polyresin  
A00025515, 4 Pcs  
9.2X9.2X30.5 cm



SERAFINA DECORATION TREE  
Ant. L. Gold, Polyresin  
A00025562, 4 Pcs  
14.5X14X47.8 cm



SERAFINA DECORATION TREE  
Ant. L. Gold, Polyresin  
A00025561, 4 Pcs  
11X11X37.5 cm



SEMILLE TREE  
L. Gold, Polyresin  
A00012771, 2 Pcs  
16X16X44 cm



SEMILLE TREE  
L. Gold, Polyresin  
A00012774, 4 Pcs  
13X13X29 cm



ALANA TREE  
L. Gold, Polyresin  
A00025452, 4 Pcs  
15.5X15.5X50 cm



ALANA TREE  
L. Gold, Polyresin  
A00025449, 4 Pcs  
12.5X12.5X39.5 cm



ALANA TREE  
L. Gold/Rose, Polyresin  
A00025445, 4 Pcs  
10X10X30 cm



ALANA TREE  
L. Gold/Rose, Polyresin  
A00025440, 8 Pcs  
6.5X6.5X20.5 cm



ALANA TREE  
L. Gold/D. Green, Polyresin  
A00025446, 4 Pcs  
10X10X30 cm



ALANA TREE  
L. Gold/D. Green, Polyresin  
A00025441, 8 Pcs  
6.5X6.5X20.5 cm



ALANA TREE  
D. Green/L. Gold, Polyresin  
A00025443, 8 Pcs  
6.5X6.5X20.5 cm



Marble tree

ELINA TREE  
Green, Marble  
A00025588, 2 Pcs  
7.5X7.5X16 cm





SISSIA TREE  
L. Gold, Polyresin  
A00019948, 6 Pcs  
6X6X20 cm



SEMISE TREE  
L. Gold, Polyresin  
A00012784, 4 Pcs  
13X13X30 cm



SEMISE TREE  
L. Gold, Polyresin  
A00012785, 4 Pcs  
14X14X33 cm



CRISTELLE TREE  
L. Gold, Glass  
A00012853, 4 Pcs  
11X11X40 cm



STASSIA TREE  
Ant. L. Gold, Polyresin  
A00019968, 4 Pcs  
11.8X11.8X42 cm



ALIVIA TREE  
L. Gold, Rattan  
A00012787, 4 Pcs  
13X13X30 cm



ALIVIA TREE  
L. Gold, Rattan  
A00012789, 4 Pcs  
17X17X40 cm



ALVILLE LED TREE  
L. Gold, Rattan/LED  
A00012791, 2 Pcs  
15X15X40 cm



## Marble tree



ELINA TREE  
Brown, Marble  
A00025592, 2 Pcs  
10X10X25 cm



SERAFINA CONE  
Ant. L. Gold, Polyresin  
A00011095, 4 Pcs  
12X12X24.5 cm



SERAFINA CONE  
Ant. L. Gold, Polyresin  
A00011096, 2 Pcs  
16.5X16.5X31.5 cm



SERAFINA CONE  
Ant. L. Gold, Polyresin  
A00011097, 2 Pcs  
21.5X21.5X42 cm



MISSIA WREATH  
L. Gold, Iron  
A00012654, 4 Pcs  
40.5X2X40.5 cm



A golden mistletoe wreath, a radiant embrace, illuminating the season with warmth and timeless elegance

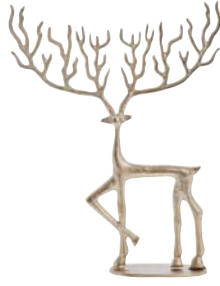


LAVOLA TREE  
L. Gold/Black, Aluminum  
A00019801, 2 Pcs  
25X10X48.5 cm





MARELY DEER  
L. Gold, Aluminum  
A00012594, 1 Pcs  
43X10.5X60 cm



MARELY DEER  
L. Gold, Aluminum  
A00012590, 2 Pcs  
30.5X8X36.5 cm



MARELY DEER  
L. Gold, Aluminum  
A00012592, 4 Pcs  
13X5.5X19 cm



MARELY DEER  
L. Gold, Aluminum  
A00010438, 1 Pcs  
21X34X64 cm



MARELY DEER  
L. Gold, Aluminum  
A00010439, 4 Pcs  
10X14X27 cm



*Dazzling golden deer,  
a bestseller in Christ-  
mas decor, adds a touch  
of regal enchantment to  
your festive celebrations*



DAISY DEER  
Ant. Brass, Polyresin  
A00025464, 2 Pcs  
35X19X44.5 cm



DAISY DEER  
Ant. Brass, Polyresin  
A00025465, 2 Pcs  
32.5X16X41.5 cm



SESSIA DEER  
L. Gold, Polyresin  
A00012649, 2 Pcs  
27X8X34 cm



SESSIA DEER  
L. Gold, Polyresin  
A00012651, 4 Pcs  
22X5X20 cm



SESSIA DEER  
L. Gold, Polyresin  
A00012650, 4 Pcs  
23X9X17 cm



SERAFINA DEER  
Ant. L. Gold, Polyresin  
A00011137, 12 Pcs  
8X4X14 cm



SERAFINA DEER  
Ant. L. Gold, Polyresin  
A00011138, 12 Pcs  
7.5X4.5X14 cm



SERAFINA DEER  
Ant. L. Gold, Polyresin  
A00011136, 12 Pcs  
8X4.5X10 cm





SEBINA BEAR  
Ant. L. Gold, Polyresin  
A00025531, 4 Pcs  
10.7X9.5X11 cm



SEBINA BEAR  
Ant. L. Gold, Polyresin  
A00025534, 4 Pcs  
13X10.2X20.5 cm



SEBINA BEAR  
Ant. L. Gold, Polyresin  
A00019985, 4 Pcs  
19.5X11.5X11.5 cm



SEBINA BEAR  
Ant. L. Gold, Polyresin  
A00019988, 4 Pcs  
13.2X10.5X20 cm



AMARI BIRD  
Ant. L. Gold, Polyresin  
A00025371, 4 Pcs  
30.5X11X22.5 cm



SEGILLA GOOSE  
Ant. L. Gold, Polyresin  
A00019957, 2 Pcs  
16.5X12X26.5 cm



SEHOLIA HOUSE  
Ant. L. Gold, Polyresin  
A00019978, 2 Pcs  
11X9X17 cm



SEHOLIA HOUSE  
Ant. L. Gold, Polyresin  
A00019979, 2 Pcs  
9X9X28 cm



SERAFINA SCOOTER  
Ant. L. Gold, Polyresin  
A00010639, 6 Pcs  
15X7X15 cm



SESENIA FIGURINE  
L. Gold, Polyresin  
A00019822, 6 Pcs  
6.5X5X19.5 cm



SESENIA FIGURINE  
L. Gold, Polyresin  
A00019821, 4 Pcs  
9X8X26 cm



SESENIA FIGURINE  
L. Gold, Polyresin  
A00019820, 2 Pcs  
11X9.5X32 cm



SERAFINA SLEIGH  
Ant. L. Gold, Polyresin  
A00011165, 2 Pcs  
17X9X21.5 cm



SERAFINA FIGURINE  
Ant. L. Gold, Polyresin  
A00010591, 6 Pcs  
7X8X23 cm



SERAFINA FIGURINE  
Ant. L. Gold, Polyresin  
A00010590, 6 Pcs  
7X7X23 cm



SERAFINA FIGURINE  
Ant. L. Gold, Polyresin  
A00010589, 4 Pcs  
10X8X32 cm







SEBINA BEAR  
White/L. Gold, Polyresin  
A00025533, 4 Pcs  
10.7X9.5X11 cm



SEBINA BEAR  
White/L. Gold, Polyresin  
A00025536, 4 Pcs  
13X10.2X20.5 cm



SEBINA BEAR  
White/L. Gold, Polyresin  
A00019983, 4 Pcs  
19.5X11.5X11.5 cm



SEBINA BEAR  
White/L. Gold, Polyresin  
A00019986, 4 Pcs  
13.2X10.5X20 cm



SEHOLIA HOUSE  
White, Polyresin  
A00019976, 2 Pcs  
11X9X17 cm



SEHOLIA HOUSE  
White, Polyresin  
A00019981, 2 Pcs  
9X9X28 cm



SEGILLA GOOSE  
White, Polyresin  
A00019989, 2 Pcs  
16.5X12X26.5 cm



SALINNA MOUSE  
White/L. Gold, Polyresin  
A00019973, 4 Pcs  
6.5X4X25.5 cm



SALINNA MOUSE  
White/L. Gold, Polyresin  
A00019971, 2 Pcs  
8X5X32.5 cm



ALIVIA TREE  
White, Rattan  
A00012786, 4 Pcs  
13X13X30 cm



ALIVIA TREE  
White, Rattan  
A00012788, 4 Pcs  
17X17X40 cm



SEFROSA TREE  
White, Polyresin  
A00019961, 2 Pcs  
13.5X9.5X36.5 cm



CRISTELLE TREE  
White, Glass  
A00012854, 4 Pcs  
11X11X40 cm



STASSIA TREE  
White, Polyresin  
A00019966, 4 Pcs  
11.8X11.8X42 cm



AVESIA  
White, Feather  
A00025305, 4 Pcs  
20X20X32 cm



AVESIA FEATHER TREE  
White, Feather  
A00025297, 4 Pcs  
23X23X40 cm



SERAFINA DECORATION TREE  
White, Polyresin  
A00025559, 4 Pcs  
11X11X37.5 cm



SERAFINA DECORATION TREE  
White, Polyresin  
A00025560, 4 Pcs  
14.5X14X47.8 cm







SELLA HORSE  
Powder, Polyresin  
A00012940, 2 Pcs  
38X8X31 cm



SELLA HORSE  
Powder, Polyresin  
A00012942, 4 Pcs  
14X11X5 cm



SELLA HORSE  
Grey, Polyresin  
A00012941, 2 Pcs  
38X8X31 cm



SELLA HORSE  
Grey, Polyresin  
A00012943, 4 Pcs  
14X11X5 cm



SERAFINA PINE CONE  
Ant. Silver, Polyresin  
A00011068, 2 Pcs  
18X18X48.5 cm



SERAFINA PINE CONE  
Ant. Silver, Polyresin  
A00011066, 2 Pcs  
21.5X21.5X42 cm



SERAFINA PINE CONE  
Ant. Silver, Polyresin  
A00011067, 2 Pcs  
16.5X16.5X31.5 cm



SERAFINA PINE CONE  
Ant. Silver, Polyresin  
A00011065, 4 Pcs  
12X12X24.5 cm



LAVOLA TREE  
Silver/Black, Aluminum  
A00019800, 2 Pcs  
25X10X48.5 cm



STASSIA TREE  
Ant. Silver, Polyresin  
A00019967, 4 Pcs  
11.8X11.8X42 cm



SERAFINA APPLE  
L. Gold, Polyresin  
A00011145, 4 Pcs  
14X14X17 cm



SERAFINA APPLE  
L. Gold, Polyresin  
A00011144, 6 Pcs  
9.5X9.5X10.5 cm



MISSIA WREATH  
Silver, Iron  
A00012672, 4 Pcs  
40.5X2X40.5 cm



ALVILLE LED TREE  
Silver, Rattan/LED  
A00012751, 2 Pcs  
15X15X40 cm



ALIVIA TREE  
Silver, Rattan  
A00012750, 4 Pcs  
17X17X40 cm



ALIVIA TREE  
Silver, Rattan  
A00012749, 4 Pcs  
13X13X30 cm







GRACIE PINE CONE DECORATION  
Ant. Silver, Polyresin  
A00025507, 4 Pcs  
16.5X16.5X40.2 cm



5 705764 828284



GRACIE PINE CONE DECORATION  
Ant. Silver, Polyresin  
A00025506, 4 Pcs  
15.5X15.5X35.5 cm



5 705764 828277



GRACIE TREE  
Ant. Silver, Polyresin  
A00025516, 4 Pcs  
10.5X10.5X34 cm



5 705764 828376



GRACIE TREE  
Ant. Silver, Polyresin  
A00025514, 4 Pcs  
9.2X9.2X30.5 cm



5 705764 828352



SEMISE TREE  
Silver, Polyresin  
A00012648, 4 Pcs  
14X14X33 cm



5 705764 760201



SEMISE TREE  
Silver, Polyresin  
A00012647, 4 Pcs  
13X13X30 cm



5 705764 760195



SISSIA TREE  
Silver, Polyresin  
A00019949, 6 Pcs  
9X9X25 cm



5 705764 769471



SISSIA TREE  
Silver, Polyresin  
A00019951, 6 Pcs  
6X6X20 cm



5 705764 769495



SEMILLE TREE  
Silver, Polyresin  
A00012772, 2 Pcs  
16X16X44 cm



5 705764 761444



SEMILLE TREE  
Silver, Polyresin  
A00012773, 4 Pcs  
13X13X29 cm



5 705764 761451



SERAFINA TREE  
Ant. Silver, Polyresin  
A00000952, 6 Pcs  
10X10X20 cm



5 705764 647977



SERAFINA TREE  
Ant. Silver, Polyresin  
A00000950, 6 Pcs  
10X10X15 cm



5 705764 647953



SALINNA MOUSE  
White/Silver, Polyresin  
A00019972, 2 Pcs  
8X5X32.5 cm



5 705764 769709



SALINNA MOUSE  
White/Silver, Polyresin  
A00019974, 4 Pcs  
6.5X4X25.5 cm



5 705764 769723



SEGILLA GOOSE  
Ant. Silver, Polyresin  
A00019990, 2 Pcs  
16.5X12X26.5 cm



5 705764 769884



SERAFINA SLEIGH  
Ant. Silver, Polyresin  
A00011164, 4 Pcs  
17X9X21.5 cm



5 705764 746014



SERAFINA SCOOTER  
Ant. Silver, Polyresin  
A00010638, 6 Pcs  
15X7X15 cm



5 705764 725521



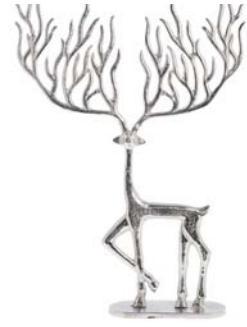
SESSIA DEER  
Silver, Polyresin  
A00012777, 4 Pcs  
23X9X17 cm



MARELY DEER  
Silver, Aluminum  
A00012555, 4 Pcs  
13X5.5X19 cm



MARELY DEER  
Silver, Aluminum  
A00012553, 2 Pcs  
30.5X8X36.5 cm



MARELY DEER  
Silver, Aluminum  
A00012554, 1 Pcs  
43X10.5X60 cm



SESSIA DEER  
Silver, Polyresin  
A00012776, 2 Pcs  
27X8X34 cm



SESSIA DEER  
Silver, Polyresin  
A00012778, 4 Pcs  
22X5X20 cm



MARELY DEER  
Silver, Aluminum  
A00010437, 4 Pcs  
10X14X27 cm



MARELY DEER  
Silver, Aluminum  
A00010436, 1 Pcs  
21X34X64 cm



SERAFINA FIGURINE  
Ant. Silver, Polyresin  
A00019959, 6 Pcs  
7.2X9X22.7 cm



SERAFINA FIGURINE  
Ant. Silver, Polyresin  
A00019958, 6 Pcs  
7.2X7.2X22.7 cm



SERAFINA FIGURINE  
Ant. Silver, Polyresin  
A00019960, 6 Pcs  
10.5X7.7X32 cm



TINSIE FIGURINE  
White, Polyresin  
A00012530, 2 Pcs  
8X7X29.5 cm



SEBINA BEAR  
Ant. Silver, Polyresin  
A00019984, 4 Pcs  
19.5X11.5X11.5 cm



SEBINA BEAR  
Ant. Silver, Polyresin  
A00019987, 4 Pcs  
13.2X10.5X20 cm



SERAFINA SNOWMAN  
Ant. Silver, Polyresin  
A00007876, 6 Pcs  
8X8X18 cm



SERAFINA SNOWMAN  
Ant. Silver, Polyresin  
A00007875, 4 Pcs  
10X10X26 cm





MARELY DEER  
Black, Aluminum  
A00012595, 1 Pcs  
43X10.5X60 cm



MARELY DEER  
Black, Aluminum  
A00012591, 2 Pcs  
30.5X8X36.5 cm



MARELY DEER  
Black, Aluminum  
A00012593, 4 Pcs  
13X5.5X19 cm



MARELY DEER  
Black, Aluminum  
A00008024, 1 Pcs  
21X34X64 cm



MARELY DEER  
Black, Aluminum  
A00007826, 2 Pcs  
10X14X27 cm



*Sleek and sophisticated, the black aluminum bestseller deer Christmas decor brings modern elegance and a touch of avant-garde charm to your festive setting*



SESSIA DEER  
Black, Polyresin  
A00019810, 2 Pcs  
29X12X37.5 cm



SESSIA DEER  
Black, Polyresin  
A00019812, 4 Pcs  
23X6.5X21 cm



SESSIA DEER  
Black, Polyresin  
A00019811, 6 Pcs  
22.5X9X16.5 cm



SESENIA FIGURINE  
Black, Polyresin  
A00019817, 2 Pcs  
11X9.5X32 cm



SESENIA FIGURINE  
Black, Polyresin  
A00019818, 4 Pcs  
9X8X26 cm



SESENIA FIGURINE  
Black, Polyresin  
A00019819, 6 Pcs  
6.5X5X19.5 cm





SERAFINA SNOWMAN  
Black, Polyresin  
A00008031, 6 Pcs  
8X8X18 cm



5 705764 717663



SERAFINA SNOWMAN  
Black, Polyresin  
A00008030, 4 Pcs  
10X10X26 cm



5 705764 717656



TINSIE FIGURINE  
Black, Polyresin  
A00012758, 2 Pcs  
8X7X29.5 cm



5 705764 761307

*Adorable black snowmen and charming houses for led lights create a cozy Christmas tableau, casting a warm and whimsical glow to brighten your holiday spirits.*



SEHOLIA HOUSE  
Black, Polyresin  
A00019975, 2 Pcs  
11X9X17 cm



5 705764 769730



SEHOLIA HOUSE  
Black, Polyresin  
A00019986, 2 Pcs  
9X9X28 cm



5 705764 769785



SEMISE TREE  
Black, Polyresin  
A00019816, 4 Pcs  
14X14X30 cm



5 705764 768146



SEMISE TREE  
Black, Polyresin  
A00019815, 4 Pcs  
15X15X33 cm



5 705764 768139



PAPELLE TREE  
Black, Paper  
A00019886, 6 Pcs  
15X15X30.5 cm



5 705764 768849



SERAFINA TREE  
Black, Polyresin  
A00011053, 4 Pcs  
11X11X24 cm



5 705764 744904



SERAFINA TREE  
Black, Polyresin  
A00011038, 4 Pcs  
11X11X34 cm



5 705764 744751



SERAFINA TREE  
Black, Polyresin  
A00010641, 4 Pcs  
9X9X30 cm



5 705764 725552



SERAFINA TREE  
Black, Polyresin  
A00010642, 2 Pcs  
14X14X63 cm



5 705764 725569





PAPPIA TREE  
D. Green, Paper  
A00019847, 6 Pcs  
16X16X31.5 cm



5 705764 768450



PAPPIA TREE  
D. Green, Paper  
A00019852, 6 Pcs  
20X20X30 cm



5 705764 768504



PAPPIA TREE  
D. Green, Paper  
A00019842, 4 Pcs  
27X27X38 cm



5 705764 768405





PAPPIA TREE  
White, Paper  
A00019841, 4 Pcs  
27X27X38 cm



5 705764 768399



PAPPIA TREE  
White, Paper  
A00019851, 6 Pcs  
20X20X30 cm



5 705764 768498



PAPPIA TREE  
Rose Smoke, Paper  
A00019843, 4 Pcs  
27X27X38 cm



5 705764 768412



PAPPIA TREE  
Rose Smoke, Paper  
A00019853, 6 Pcs  
20X20X30 cm



5 705764 768511



PAPPIA TREE  
Rose Smoke, Paper  
A00019848, 6 Pcs  
16X16X31.5 cm



5 705764 768467



PAPPIA TREE  
Meerkat, Paper  
A00019839, 4 Pcs  
27X27X38 cm



5 705764 768375



PAPPIA TREE  
Meerkat, Paper  
A00019849, 6 Pcs  
20X20X30 cm



5 705764 768474



PAPPIA TREE  
Meerkat, Paper  
A00019844, 6 Pcs  
16X16X31.5 cm



5 705764 768429



PAPPIA TREE  
Pomegranate, Paper  
A00019840, 4 Pcs  
27X27X38 cm



5 705764 768382



PAPPIA TREE  
Pomegranate, Paper  
A00019850, 6 Pcs  
20X20X30 cm



5 705764 768481



PAPPIA TREE  
Pomegranate, Paper  
A00019845, 6 Pcs  
16X16X31.5 cm



5 705764 768436



MOLINNE TREE  
L. Grey, Ceramics  
A00012946, 4 Pcs  
7.5X7.5X16 cm



MOLINNE TREE  
L. Grey, Ceramics  
A00012945, 4 Pcs  
10.5X10.5X20.5 cm



MOLINNE TREE  
L. Grey, Ceramics  
A00012944, 2 Pcs  
11.5X11.5X26 cm



HOLLIA HOUSE  
White, Stoneware  
A00019996, 2 Pcs  
13.5X9.2X18 cm



HOLLIA HOUSE  
White, Stoneware  
A00020000, 2 Pcs  
13X9X29 cm



MOLINNE TREE  
Grey, Ceramics  
A00012728, 4 Pcs  
7.5X7.5X16 cm



MOLINNE TREE  
Grey, Ceramics  
A00012725, 4 Pcs  
10.5X10.5X20.5 cm



MOLINNE TREE  
Grey, Ceramics  
A00012722, 2 Pcs  
11.5X11.5X26 cm



HOLLIA HOUSE  
D. Grey, Stoneware  
A00019997, 2 Pcs  
13.5X9.2X18 cm



HOLLIA HOUSE  
D. Grey, Stoneware  
A00019995, 2 Pcs  
13X9X29 cm



MOLINNE TREE  
Black, Ceramics  
A00012727, 4 Pcs  
7.5X7.5X16 cm



MOLINNE TREE  
Black, Ceramics  
A00012724, 4 Pcs  
10.5X10.5X20.5 cm



MOLINNE TREE  
Black, Ceramics  
A00012721, 2 Pcs  
11.5X11.5X26 cm



HOLLIA HOUSE  
D. Green, Stoneware  
A00019998, 2 Pcs  
13.5X9.2X18 cm



HOLLIA HOUSE  
D. Green, Stoneware  
A00019999, 2 Pcs  
13X9X29 cm









STASSIA HEART  
 Pom./L. Gold, 100% Cotton  
 A00019894, 6 Pcs  
 8X4.5X6.5 cm



5 705764 768924



STASSIA HEART  
 D. Grey/Silver, 100% Cotton  
 A00019895, 6 Pcs  
 8X4.5X6.5 cm



5 705764 768931



STASSIA CONE  
 Pom./L. Gold, 100% Cotton  
 A00019892, 6 Pcs  
 7X7X12 cm



5 705764 768900



STASSIA CONE  
 D. Grey/Silver, 100% Cotton  
 A00019893, 6 Pcs  
 7X7X12 cm



5 705764 768917



STASSIA CHRISTMAS STOCKING  
 Pom./L. Gold, 100% Cotton  
 A00019890, 4 Pcs  
 23X3X38 cm



5 705764 768887



STASSIA CHRISTMAS STOCKING  
 D. Grey/Silver, 100% Cotton  
 A00019891, 4 Pcs  
 23X3X38 cm



5 705764 768894



CAVIA CHRISTMAS TREE STAND  
L. Gold, Aluminum  
A00012606, 1 Pcs  
38X38X16 cm



STASSIA CHRISTMAS TREE RUG  
Pom./L. Gold, 100% Cotton  
A00019888, 2 Pcs  
110X110 cm



CAVIA CHRISTMAS TREE STAND  
Black, Aluminum  
A00012607, 1 Pcs  
38X38X16 cm



STASSIA CHRISTMAS TREE RUG  
D. Grey/Silver, 100% Cotton  
A00019889, 2 Pcs  
110X110 cm



CAVIA CHRISTMAS TREE STAND  
Silver, Aluminum  
A00012605, 1 Pcs  
38X38X16 cm



CRISTIVIA CHRISTMAS TREE RUG  
White/Multi, 100% Cotton  
A00012670, 2 Pcs  
110X110 cm





# Votives & candlesticks







MISSIA CANDLESTICK  
Light Gold, Iron  
A00020003, 2 Pcs  
26X10.5X34 cm



5 705764 770019



MISSIA CANDLESTICK  
L. Gold, Iron  
A00012632, 4 Pcs  
14.5X10.5X30 cm



5 705764 760041



MISSIA CANDLESTICK  
L. Gold, Iron  
A00012633, 4 Pcs  
14.5X9.5X25 cm



5 705764 760058



MISSIA CANDLESTICK  
L. Gold, Iron  
A00020005, 2 Pcs  
33X33X4.5 cm



5 705764 770033



MISSIA CANDLEHOLDER  
L. Gold, Iron  
A00020004, 4 Pcs  
10X10X6 cm



5 705764 770026



MISSIA CANDLESTICK  
Silver, Iron  
A00020002, 2 Pcs  
26X10.5X34 cm



5 705764 770002



MISSIA CANDLESTICK  
Silver, Iron  
A00012634, 4 Pcs  
14.5X10.5X30 cm



5 705764 760065



MISSIA CANDLESTICK  
Silver, Iron  
A00012635, 4 Pcs  
14.5X9.5X25 cm



5 705764 760072



MISSIA CANDLESTICK  
Silver, Iron  
A00020006, 2 Pcs  
33X33X4.5 cm



5 705764 770040



MISSIA CANDLEHOLDER  
Silver, Iron  
A00020001, 4 Pcs  
10X10X6 cm



5 705764 769990



LAVILLIA CANDLESTICK  
L. Gold, Aluminum  
A00019798, 2 Pcs  
12X12X40.5 cm



5 705764 767965



LAVILLIA CANDLESTICK  
L. Gold, Aluminum  
A00019797, 2 Pcs  
10X10X31.5 cm



5 705764 767958



LAVILLIA CANDLESTICK  
Silver, Aluminum  
A00019799, 2 Pcs  
12X12X40.5 cm



5 705764 767972



LAVILLIA CANDLESTICK  
Silver, Aluminum  
A00019796, 2 Pcs  
10X10X31.5 cm



5 705764 767941



SANDIA CANDLESTICK  
L. Gold, Aluminum  
A00024523, 4 Pcs  
10X10X31.5 cm



5 705764 771078



SANDIA CANDLESTICK  
L. Gold, Aluminum  
A00024521, 4 Pcs  
10X10X24 cm



5 705764 771054



SANDIA CANDLESTICK  
Silver, Aluminum  
A00024524, 4 Pcs  
10X10X31.5 cm



5 705764 771085



SANDIA CANDLESTICK  
Silver, Aluminum  
A00024522, 4 Pcs  
10X10X24 cm



5 705764 771061



CAVILLE STAR  
Black, Aluminum  
A00012584, 12 Pcs  
8X8X2 cm



5 705764 759564



CAVILLE STAR  
Black, Aluminum  
A00012585, 6 Pcs  
9.5X9.5X2.5 cm



5 705764 759571



CAVILLE SNOWFLAKE  
Black, Aluminum  
A00012587, 12 Pcs  
8X8X2.5 cm



5 705764 759595



CAVILLE SNOWFLAKE  
Black, Aluminum  
A00012589, 6 Pcs  
9.5X9.5X3 cm



5 705764 759618



CAVILLE STAR  
Silver, Aluminum  
A00012559, 12 Pcs  
8X8X2 cm



5 705764 759311



CAVILLE STAR  
Silver, Aluminum  
A00012558, 6 Pcs  
9.5X9.5X2.5 cm



5 705764 759304



CAVILLE SNOWFLAKE  
Silver, Aluminum  
A00012557, 12 Pcs  
8X8X2.5 cm



5 705764 759298



CAVILLE SNOWFLAKE  
Silver, Aluminum  
A00012556, 6 Pcs  
9.5X9.5X3 cm



5 705764 759281



CAVILLE STAR  
L. Gold, Aluminum  
A00012582, 12 Pcs  
8X8X2 cm



5 705764 759540



CAVILLE STAR  
L. Gold, Aluminum  
A00012583, 6 Pcs  
9.5X9.5X2.5 cm



5 705764 759557



CAVILLE SNOWFLAKE  
L. Gold, Aluminum  
A00012586, 12 Pcs  
8X8X2.5 cm



5 705764 759588



CAVILLE SNOWFLAKE  
L. Gold, Aluminum  
A00012588, 6 Pcs  
9.5X9.5X3 cm



5 705764 759601



SERAFINA CANDLESTICK  
White, Polyresin  
A00019993, 2 Pcs  
23X14X31 cm



5 705764 769914



SERAFINA CANDLESTICK  
Silver, Polyresin  
A00019994, 2 Pcs  
23X14X31 cm



5 705764 769921



SERAFINA CANDLESTICK  
Ant. L. Gold, Polyresin  
A00019991, 2 Pcs  
23X14X31 cm



5 705764 769891





SERAFINA CANDLESTICK  
L. Gold, Polyresin  
A00007921, 24 Pcs  
6X6X6 cm



5 705764 717038



SERAFINA CANDLESTICK  
L. Gold, Polyresin  
A00003495, 24 Pcs  
7X7X8 cm



5 705764 672641



SERAFINA CANDLESTICK  
L. Gold, Polyresin  
A00025521, 16 Pcs  
9.5X9.5X10.2 cm



5 705764 828420



SERAFINA CANDLESTICK  
L. Gold, Polyresin  
A00025551, 4 Pcs  
24X9X8.8 cm



5 705764 828727



SERAFINA CANDLESTICK  
Ant. Brass, Polyresin  
A00025519, 24 Pcs  
6X6X6 cm



5 705764 828406



SERAFINA CANDLESTICK  
Ant. Brass, Polyresin  
A00025520, 24 Pcs  
7X7X8 cm



5 705764 828413



SERAFINA CANDLESTICK  
Ant. Brass, Polyresin  
A00025518, 16 Pcs  
9.5X9.5X10.2 cm



5 705764 828390



SERAFINA CANDLESTICK  
Ant. Brass, Polyresin  
A00025631, 4 Pcs  
24X9X8.8 cm



5 705764 829588



SERAFINA CANDLESTICK  
Ant. Silver, Polyresin  
A00008025, 24 Pcs  
6X6X6 cm



5 705764 717601



SERAFINA CANDLESTICK  
Ant. Silver, Polyresin  
A00003497, 24 Pcs  
7X7X8 cm



5 705764 672665



SERAFINA CANDLESTICK  
Ant. Silver, Polyresin  
A00025522, 16 Pcs  
9.5X9.5X10.2 cm



5 705764 828437



SERAFINA CANDLESTICK  
Ant. Silver, Polyresin  
A00025552, 4 Pcs  
24X9X8.8 cm



5 705764 828734



GRACIE CANDLESTICK  
Ant. Silver, Polyresin  
A00025510, 6 Pcs  
14X14X28.3 cm



5 705764 828314



GRACIE CANDLESTICK  
Ant. L. Gold, Polyresin  
A00025511, 6 Pcs  
14X14X28.3 cm



5 705764 828321



CROVIA VOTIVE  
D. Green, Glass  
A00021826, 6 Pcs  
13X13X10.3 cm



5 705764 770552



CROVIA VOTIVE  
D. Green, Glass  
A00021822, 6 Pcs  
9X9X7.5 cm



5 705764 770514



HOLLIA CANDLESTICK  
D. Green, Ceramics  
A00025269, 6 Pcs  
5.5X4.2X8 cm



5 705764 825962



HOLLIA CANDLESTICK  
D. Green, Ceramics  
A00025273, 6 Pcs  
6.2X4.4X7.5 cm



5 705764 826006



CROVIA VOTIVE  
D. Grey, Glass  
A00021827, 6 Pcs  
13X13X10.3 cm



5 705764 770569



CROVIA VOTIVE  
D. Grey, Glass  
A00021823, 6 Pcs  
9X9X7.5 cm



5 705764 770521



HOLLIA CANDLESTICK  
D. Grey, Ceramics  
A00025268, 6 Pcs  
5.5X4.2X8 cm



5 705764 825955



HOLLIA CANDLESTICK  
D. Grey, Ceramics  
A00025272, 6 Pcs  
6.2X4.4X7.5 cm



5 705764 825993



CROVIA VOTIVE  
Pomegranate, Glass  
A00021828, 6 Pcs  
13X13X10.3 cm



5 705764 770576



CROVIA VOTIVE  
Pomegranate, Glass  
A00021824, 6 Pcs  
9X9X7.5 cm



5 705764 770538



HOLLIA CANDLESTICK  
White, Ceramics  
A00025270, 6 Pcs  
5.5X4.2X8 cm



5 705764 825979



HOLLIA CANDLESTICK  
White, Ceramics  
A00025274, 6 Pcs  
6.2X4.4X7.5 cm



5 705764 826013



MELIA HEART  
Pomegranate, Glass  
A00012888, 12 Pcs  
7.8X7.8X4.5 cm



5 705764 762601



MELIA HEART  
D. Grey, Glass  
A00012720, 12 Pcs  
7.8X7.8X4.5 cm



5 705764 760928



MELIA HEART  
D. Green, Glass  
A00012889, 12 Pcs  
7.8X7.8X4.5 cm



5 705764 762618

*Christmas votives:  
glowing warmth for  
festive charm*



ROSIE LANTERN  
Nature, Rattan  
A00016648, 2 Pcs  
37X37X31 cm



5 705764 767279



ROSIE LANTERN  
Nature, Rattan  
A00016647, 2 Pcs  
31X31X41.5 cm



5 705764 767262



HARPER LANTERN  
Nature/Grey, Rattan  
A00024969, 2 Pcs  
30X30X32 cm



5 705764 774635



HARPER LANTERN  
Nature/Grey, Rattan  
A00024968, 1 Pcs  
40X40X46 cm



5 705764 774628



NOVIENNE LANTERN  
Nature, Bamboo/Glass  
A00024979, 2 Pcs  
30X25 cm



5 705764 775274



NOVIENNE LANTERN  
Nature, Bamboo/Glass  
A00024980, 2 Pcs  
40X26 cm



5 705764 775281



NOVIENNE LANTERN  
Nature, Bamboo/Glass  
A00024981, 2 Pcs  
28X42 cm



5 705764 775298





MISSIA LANTERN  
Silver, Iron/Glass  
A00012671, 2 Pcs  
18.5X17X23.5 cm



MISSIA LANTERN  
Silver, Iron/Glass  
A00012665, 2 Pcs  
22X20.5X28 cm



HAZEL LANTERN  
Ant. Nature, Rattan/Glass  
A00010579, 4 Pcs  
24X24X26 cm



HAZEL LANTERN  
Ant. Nature, Rattan/Glass  
A00010580, 2 Pcs  
30X30X45 cm



HAZEL LANTERN  
Black, Rattan/Glass  
A00010581, 4 Pcs  
24X24X26 cm



HAZEL LANTERN  
Black, Rattan/Glass  
A00010582, 2 Pcs  
30X30X45 cm







HARPER LANTERN  
Nature, Rattan  
A00025017, 4 Pcs  
21X21X21 cm



HARPER LANTERN  
Nature/Grey, Rattan  
A00024971, 4 Pcs  
15X15X17 cm



NORALLE LANTERN  
Nature, Rattan  
A00024995, 1 Pcs  
27X27X51 cm



NORALLE LANTERN  
Nature, Rattan  
A00024994, 1 Pcs  
30X30X40 cm



# T Trays





LAVISSE DECORATION BOWL  
L. Gold, Aluminum  
A00019809, 2 Pcs  
33X33X14 cm



5 705764 768078



LAVISSE DECORATION BOWL  
L. Gold, Aluminum  
A00019808, 2 Pcs  
26X26X11 cm



5 705764 768061



LAVISSE DECORATION BOWL  
Silver, Aluminum  
A00019807, 2 Pcs  
33X33X14 cm



5 705764 768054



LAVISSE DECORATION BOWL  
Silver, Aluminum  
A00019806, 2 Pcs  
26X26X11 cm



5 705764 768047



LAVISSE DECORATION PLATE  
L. Gold, Aluminum  
A00019805, 1 Pcs  
49.5X49.5X2.5 cm



5 705764 768030



LAVISSE DECORATION PLATE  
L. Gold, Aluminum  
A00019804, 2 Pcs  
39.5X39.5X2 cm



5 705764 768023



LAVISSE DECORATION PLATE  
Silver, Aluminum  
A00019803, 1 Pcs  
49.5X49.5X2.5 cm



5 705764 768016



LAVISSE DECORATION PLATE  
Silver, Aluminum  
A00019802, 2 Pcs  
39.5X39.5X2 cm



5 705764 768009



LAVIA TRAY  
L. Gold, Aluminum  
A00012598, 2 Pcs  
41X26X3 cm



5 705764 759700



LAVIA TRAY  
L. Gold, Aluminum  
A00012597, 2 Pcs  
30.5X19X3 cm



5 705764 759694



LAVIA TRAY  
Silver, Aluminum  
A00012549, 2 Pcs  
41X26X3 cm



5 705764 759212



LAVIA TRAY  
Silver, Aluminum  
A00012548, 2 Pcs  
30.5X19X3 cm



5 705764 759205



BETHEL TRAY  
Silver/Clear, Brass/Glass  
425904015, 2 Pcs  
40X18X35 cm



5 705764 604475



BETHEL TRAY  
Silver/Clear, Brass/Glass  
425903015, 4 Pcs  
30X14X35 cm



5 705764 604468



BETHEL TRAY  
Silver/Clear, Brass/Glass  
262503625, 2 Pcs  
36X36X4 cm



5 705764 607476



BETHEL TRAY  
Silver/Clear, Brass/Glass  
262502515, 4 Pcs  
25X25X4 cm



5 705764 607483



BETHEL TRAY  
Silver/Clear, Brass/Glass  
262501615, 6 Pcs  
16X16X4 cm



5 705764 607469



SARIA DECORATIVE TRAY  
Ant. Gold/Clear, Polyresin/Glass  
A00012614, 2 Pcs  
36X36X4 cm



SARIA DECORATIVE TRAY  
Ant. Gold/Clear, Polyresin/Glass  
A00012615, 2 Pcs  
45X45X4 cm



TRAVINA TRAY  
Linen, Marble  
A00024958, 2 Pcs  
19.5X19.5X2 cm



TRAVINA TRAY  
Linen, Marble  
A00024959, 2 Pcs  
25.5X25.5X1.5 cm



ELLIA TRAY  
Linen, Marble  
A00016612, 4 Pcs  
25X25X2 cm



ELLIA TRAY  
Linen, Marble  
A00016611, 2 Pcs  
40X40X2 cm



ELLIA TRAY  
White, Marble  
A00016614, 4 Pcs  
25X25X2 cm



ELLIA TRAY  
White, Marble  
A00016613, 2 Pcs  
40X40X2 cm





# Candles





IVY DECORATION CANDLE  
L. Gold, Paraffin  
A00025503, 4 Pcs  
10.5X10.5X30 cm



IVY DECORATION CANDLE  
L. Gold, Paraffin  
A00025504, 6 Pcs  
7.5X7.5X20 cm



IVY DECORATION CANDLE  
L. Gold, Paraffin  
A00025505, 12 Pcs  
6X6X14.5 cm



TRELIA DECORATION CANDLE  
White, Paraffin  
A00020014, 6 Pcs  
14X14X22 cm



TRELIA DECORATION CANDLE  
White, Paraffin  
A00020026, 6 Pcs  
9X9X20 cm



TRELIA DECORATION CANDLE  
Silver, Paraffin  
A00020013, 6 Pcs  
14X14X22 cm



TRELIA DECORATION CANDLE  
Silver, Paraffin  
A00020025, 6 Pcs  
9X9X20 cm



TRELIA DECORATION CANDLE  
D. Green, Paraffin  
A00020015, 6 Pcs  
14X14X22 cm



TRELIA DECORATION CANDLE  
D. Grey, Paraffin  
A00012820, 12 Pcs  
10X10X20 cm



TRELIA DECORATION CANDLE  
D. Grey, Paraffin  
A00012872, 12 Pcs  
12X12X15 cm



TRELIA DECORATION CANDLE  
D. Grey, Paraffin  
A00012873, 12 Pcs  
9X9X10 cm





TRELIA DECORATION CANDLE  
White, Paraffin  
A00020022, 12 Pcs  
6X6X8.5 cm



5 705764 770200



TRELIA DECORATION CANDLE  
White, Paraffin  
A00020018, 12 Pcs  
8.5X8.5X10.5 cm



5 705764 770163



TRELIA DECORATION CANDLE  
Silver, Paraffin  
A00020021, 12 Pcs  
6X6X8.5 cm



5 705764 770194



TRELIA DECORATION CANDLE  
Silver, Paraffin  
A00020017, 12 Pcs  
8.5X8.5X10.5 cm



5 705764 770156



TRELIA DECORATION CANDLE  
L. Gold, Paraffin  
A00020020, 12 Pcs  
6X6X8.5 cm



5 705764 770187



TRELIA DECORATION CANDLE  
L. Gold, Paraffin  
A00020016, 12 Pcs  
8.5X8.5X10.5 cm



5 705764 770149



TRELIA DECORATION CANDLE  
D. Green, Paraffin  
A00020023, 12 Pcs  
6X6X8.5 cm



5 705764 770217



TRELIA DECORATION CANDLE  
D. Green, Paraffin  
A00020019, 12 Pcs  
8.5X8.5X10.5 cm



5 705764 770170



CRISTIELLIA DECORATION CANDLE  
Silver, Paraffin  
A00012756, 12 Pcs  
7X7X10 cm



5 705764 761284



CRISTIELLIA DECORATION CANDLE  
Silver, Paraffin  
A00012755, 12 Pcs  
7X7X15 cm



5 705764 761277



CRISTIELLIA DECORATION CANDLE  
Brown, Paraffin  
A00012819, 12 Pcs  
7X7X10 cm



5 705764 761918



CRISTIELLIA DECORATION CANDLE  
Brown, Paraffin  
A00012818, 12 Pcs  
7X7X15 cm



5 705764 761901



ELEGIA DECORATION CANDLE  
Silver, Paraffin  
A00011458, 24 Pcs  
7X7X10 cm



5 705764 748957



ELEGIA DECORATION CANDLE  
Silver, Paraffin  
A00011450, 12 Pcs  
7X7X15 cm



5 705764 748872



CRISTIELLIA DECORATION CANDLE  
D. Grey, Paraffin  
A00012825, 12 Pcs  
7X7X10 cm



5 705764 761970



CRISTIELLIA DECORATION CANDLE  
D. Grey, Paraffin  
A00012824, 12 Pcs  
7X7X15 cm



5 705764 761963





TONE TAPER CANDLE  
Bark, Paraffin  
A00012438, 12 pack/2 Pcs  
2.2X2.2X19 cm



5 705764 758031



TONE TAPER CANDLE  
D. Grey, Paraffin  
A00012437, 12 pack/2 Pcs  
2.2X2.2X19 cm



5 705764 758024



TWISTED TAPER CANDLE  
Bark/White, Paraffin  
A00012291, 12 pack/2 Pcs  
2.2X2.2X25 cm



5 705764 756563



TWISTED TAPER CANDLE  
D. Grey/White, Paraffin  
A00012431, 12 pack/2 Pcs  
2.2X2.2X25 cm



5 705764 757966



TWISTED TAPER CANDLE  
Bark, Paraffin  
A00012434, 12 pack/2 Pcs  
2.2X2.2X25 cm



5 705764 757997



TWISTED TAPER CANDLE  
D. Grey, Paraffin  
A00012290, 12 pack/2 Pcs  
2.2X2.2X25 cm



5 705764 756556



TWISTED TAPER CANDLE  
White, Paraffin  
A00012435, 12 pack/2 Pcs  
2.2X2.2X25 cm



5 705764 758000

*Spiraled elegance meets holiday cheer with twisted candles, adding a unique twist to your Christmas decor. Illuminate the season with these festive, eye-catching accents*





RUSTIC TAPER CANDLE  
White, Paraffin  
A00005372, 48 Pcs  
2X2X28 cm



5 705764 690638



RUSTIC TAPER CANDLE  
Off White, Paraffin  
A00005371, 48 Pcs  
2X2X28 cm



5 705764 690621



RUSTIC TAPER CANDLE  
Light Grey, Paraffin  
A00005370, 48 Pcs  
2X2X28 cm



5 705764 690614



RUSTIC TAPER CANDLE  
Dark Grey, Paraffin  
A00005369, 48 Pcs  
2X2X28 cm



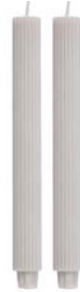
5 705764 690607



RIBBED TAPER CANDLE  
White, Paraffin  
A00012430, 12 pack/2 Pcs  
2.2X2.2X25 cm



5 705764 757959



RIBBED TAPER CANDLE  
Linen, Paraffin  
A00012428, 12 pack/2 Pcs  
2.2X2.2X25 cm



5 705764 757935



RIBBED TAPER CANDLE  
Bark, Paraffin  
A00012429, 12 pack/2 Pcs  
2.2X2.2X25 cm



5 705764 757942



RIBBED TAPER CANDLE  
D. Grey, Paraffin  
A00012427, 12 pack/2 Pcs  
2.2X2.2X25 cm



5 705764 757928



RIBBED TAPER CANDLE  
Pomegranate, Paraffin  
A00020028, 12 pack/2 Pcs  
2.2X2.2X25 cm



5 705764 770262

Elevate your Christmas table with the cozy charm of gorgeous ribbed taper candles

CHECK OUT ALL OUR RUSTIC PILLAR CANDLES ON MOODFOLK.COM



RUSTIC PILLAR CANDLE  
White, Paraffin  
466100409, 24 Pcs  
4.5X4.5X6 cm



5 705764 512022



RUSTIC PILLAR CANDLE  
White, Paraffin  
466100709, 12 Pcs  
7.5X7.5X12.5 cm



5 705764 512060



RUSTIC PILLAR CANDLE  
White, Paraffin  
466100809, 8 Pcs  
7.5X7.5X20 cm



5 705764 512107



RUSTIC PILLAR CANDLE  
White, Paraffin  
466101009, 8 Pcs  
10X10X20 cm



5 705764 512145



RUSTIC PILLAR CANDLE  
Light Grey, Paraffin  
466100437, 24 Pcs  
4.5X4.5X6 cm



5 705764 552851



RUSTIC PILLAR CANDLE  
Light Grey, Paraffin  
466100737, 12 Pcs  
7.5X7.5X12.5 cm



5 705764 553001



RUSTIC PILLAR CANDLE  
Light Grey, Paraffin  
466100837, 8 Pcs  
7.5X7.5X20 cm



5 705764 552936



RUSTIC PILLAR CANDLE  
Light Grey, Paraffin  
466101037, 8 Pcs  
10X10X20 cm



5 705764 553094



RUSTIC PILLAR CANDLE  
W. Green, Paraffin  
A00010945, 24 Pcs  
4.5X4.5X6 cm



5 705764 744252



RUSTIC PILLAR CANDLE  
W. Green, Paraffin  
A00004940, 12 Pcs  
7.5X7.5X12.5 cm



5 705764 690331



RUSTIC PILLAR CANDLE  
W. Green, Paraffin  
A00010946, 8 Pcs  
10X10X20 cm



5 705764 744249



RUSTIC PILLAR CANDLE  
W. Green, Paraffin  
A00004939, 8 Pcs  
7.5X7.5X20 cm



5 705764 690324



RUSTIC PILLAR CANDLE  
Dark Red, Paraffin  
466100424, 24 Pcs  
4.5X4.5X6 cm



5 705764 615723



RUSTIC PILLAR CANDLE  
Dark Red, Paraffin  
466100724, 12 Pcs  
7.5X7.5X12.5 cm



5 705764 615761



RUSTIC PILLAR CANDLE  
Dark Red, Paraffin  
466100824, 8 Pcs  
7.5X7.5X20 cm



5 705764 615808



RUSTIC PILLAR CANDLE  
Dark Red, Paraffin  
466101024, 8 Pcs  
10X10X20 cm



5 705764 615846



# Evergreens





VINTIA WREATH  
Green/Off White, Polyethylene/Rattan/LED  
A00012626, 2 Pcs  
60X60X15 cm



5 705764 759984



VINTIA WREATH  
Green/Off White, Polyethylene/LED  
A00012624, 2 Pcs  
55X55X10 cm



5 705764 759960



VINTIA WREATH  
Green/Off White, Polyethylene/LED  
A00012625, 2 Pcs  
45X45X10 cm



5 705764 759977



VINTIA WREATH  
Green/Off White, Polyethylene/Polyform  
A00011215, 2 Pcs  
60X18X60 cm



5 705764 746526



VINTIA WREATH  
Green/Off White, Polyethylene/Polyform  
A00011214, 4 Pcs  
42X10X42 cm



5 705764 746519



VINTIA WREATH  
Green, Polyethylene/Polyform  
A00011216, 2 Pcs  
55X12X55 cm



5 705764 746533



VINTIA WREATH  
Green/Off White, Polyethylene/Polyform  
A00012623, 1 Pcs  
65X65X8 cm



5 705764 759953



VINTIA WREATH  
Green/Off White, Polyethylene/Polyform  
A00012622, 2 Pcs  
40X40X8 cm



5 705764 759946

*Get into the holiday  
spirit with evergreen  
Christmas decor that  
lasts all season and  
beyond!*



VINTIA WREATH  
Green/Off White, Plastic/Rattan  
A00011282, 4 Pcs  
50X17X50 cm



5 705764 747196



EURELIA WREATH  
Dusty Green, Polyethylene  
A00007841, 2 Pcs  
46X46X10 cm



5 705764 715584



EURELIA WREATH  
Dusty Green, Polyethylene  
A00007838, 4 Pcs  
34X34X10 cm



5 705764 715553



VINTIA BRANCH  
Green, Polyethylene  
A00012627, 2 Pcs  
180X18X5 cm



5 705764 759991



PINEA LED PINE TREE  
Green, Polyethylene/Polyform/LED  
A00012629, 4 Pcs  
30X30X57 cm



5 705764 760010



PINEA LED PINE TREE  
Green, Polyethylene/Polyform/LED  
A00012630, 4 Pcs  
40X40X76 cm



5 705764 760027



PINEA LED PINE TREE  
Green/Off White, Polyethylene/Polyform/LED  
A00012962, 8 Pcs  
34X18X44 cm



5 705764 763349



PINEA LED PINE TREE  
Green/Off White, Polyethylene/Polyform/LED  
A00012628, 4 Pcs  
30X30X68 cm



5 705764 760003



PINEA LED PINE TREE  
Green/Off White, Polyethylene/Polyform/LED  
A00012963, 2 Pcs  
56X56X115 cm



5 705764 763356



PINEA LED PINE TREE  
Green, Polyethylene/LED  
A00010429, 12 Pcs  
25X25X60 cm



5 705764 723442



PINEA LED PINE TREE  
Green, Polyethylene/LED  
A00010372, 8 Pcs  
35X35X95 cm



5 705764 722872



PINEA LED PINE TREE  
Green, Polyethylene/LED  
A00010430, 6 Pcs  
40X40X130 cm



5 705764 723459







ALIVIA WREATH  
L. Gold, Rattan  
A00012748, 2 Pcs  
40X40X12 cm



ALIVIA WREATH  
Silver, Rattan  
A00012797, 2 Pcs  
40X40X12 cm



ALIVIA WREATH  
White, Rattan  
A00012798, 2 Pcs  
40X40X12 cm



NATILLE WREATH  
L. Gold/Nature,  
A00019792, 4 Pcs  
20X20X5.5 cm



NATILLE WREATH  
L. Gold/Nature,  
A00019791, 6 Pcs  
25X25X6.5 cm



NATILDIA WREATH  
L. Gold/Nature,  
A00019788, 2 Pcs  
31X31X5.5 cm



NATILDIA DECORATION  
L. Gold/Nature,  
A00019789, 2 Pcs  
14X14X40 cm



*Bring the rustic beauty of nature indoors with dried wreaths and trees crafted from nuts and pine cones, infusing your Christmas with a touch of woodland warmth and festive charm*



NATILDIA WREATH  
Silver/Nature,  
A00019785, 2 Pcs  
31X31X6.5 cm



NATILDIA DECORATION  
Silver/Nature,  
A00019786, 2 Pcs  
16X16X40 cm





# Contact

Lene Bjerre  
Skalhuse 10  
DK-9240 Nibe  
Tel: +45 9671 2100  
E-mail: [order@moodfolk.com](mailto:order@moodfolk.com)  
[moodfolk.com](http://moodfolk.com)

**SHOWROOM**  
Moodfolk A/S  
Sofievej 37  
DK-7480 Vildbjerg  
Tel: +45 9671 2100

To find agents near you go to [moodfolk.com](http://moodfolk.com). In the "contact" menu you will find a list of all our agents. You are also always more than welcome to contact our head office with any inquiries.

Find many more items on [moodfolk.com](http://moodfolk.com) where you can also browse through all our catalogs.

Contact our Sales department for further information and have a talk about:

- Drop shipment
- Data exchange
- Shop in shop
- or any topic you need answers to



# Salgs- og leveringsbetingelser

DANMARK. Gældende for samhandel med Lene Bjerre (LB)  
- medmindre andet er skriftligt aftalt.

## 1. GYLDIGHED

Disse almindelige salgs- og leveringsbetingelser er gældende for alle tilbud og leverancer fra Lene Bjerre (LB), medmindre anden skriftlig aftale herom foreligger parterne imellem. Der tages forbehold for trykfejl og prisændring. Køber anses for at have godkendt disse salgs- og leveringsbetingelser ved modtagelse af første levering af varer fra LB.

## 2. TILBUD, ACCEPT OG ORDREMODTAGELSE

Alle tilbud fra LB skal accepteres skriftligt inden 20 dage fra modtagelsen. Ved løbende samhandel uden fast pristilbud effektueres alle ordrer til de på ordremodtagelsesdagen gældende priser i danske kroner excl. moms og med forbehold for prisændringer i leverandørpriser, fragtpriser, toldsatser, forbrugsafgifter og valutakursudsving. Gældende priser fremgår af vedlagte prisliste. Såfremt leveringstidspunktet ligger op til 8 uger efter ordremodtagelsen, tager LB dog forbehold for ændringer i prislisten. Enhver ordre modtages med forbehold for at LB kan annullere ordren hvis LB har for lavt indsalg af pågældende design/dessin, svigt fra råva-releverandør, design/dessin udgået/udsolgt, samt force majeure. LB kan afvise en ordre, såfremt der ikke kan opnås en tilfredsstillende kreditoplysning på kunden. Der sælges ikke produkter i anbrud. Du kan justere din ordre indenfor 48 timer efter modtagelsen af ordrebekræftelsen, men kun på de varer, som ikke er tilgængelige.

Ved leverancer under kr. 1.000,00 ekskl. moms pålægges ekspeditionsgebyr på kr. 75,00. Minimumskøb ved første leverance er kr. 5.000,00 ex moms.

## 3. BETALING

3.1: LB har samarbejde med Midt Factoring A/S, som tager sig af det administrative arbejde i forbindelse med vores debitorbogholderi. Ordningen medfører, at fakturaer skal betales direkte til Midt Factoring. Alle Midt Factorings oplysninger vil fremgå på fakturaen.

3.2: Betalingen skal ske senest den dato, ordrebekræftelsen/fakturaen angiver som sidste rettidig betalingsdag.

3.3: Hvis betalingen sker efter forfaldsdato, er Midt Factoring berettiget til at beregne morarenter fra forfaldsdatoen i overensstemmelse med renteloven. Der vil yderligere blive tilskrevet rykkergebyr ved for sen betaling. Forsinkelse med forfaldne betalinger berettiger LB til at annullere eller udskyde igangværende ordrer.

## 4. LEVERING

Incoterms 2020 benyttes, alle priser er ekskl. fragt. LB er berettiget til at effektuere leverancer som delleverancer for købers regning. LB er uden ansvar for forsinkelser, der skyldes force majeure eller andre leveringshindrende omstændigheder, der rimeligvis ikke kunne forudses. I tilfælde af forsinkelse, der skyldes andre forhold end de førnævnte, hæfter LB dog ikke for indirekte skader og tab, følgeskader, driftstab, tidstab, avancetab og lignende indirekte tab.

Levering er fragtfri ved ordre over DKK. 5.000,-.

Fragnetkostninger beregnes som 9% af fakturabeløbet, dog minimum kr. 75,00 ex. moms.

Levering af varer markeret med "special fragt" er undtaget i det fragtfrie beløb, derfor vil der blive afregnet Fragtomk. for disse varer.

Hvis vi modtaget en forkert leveringsadresse eller hvis der ikke er nogen til stede på leveringstidspunktet, fakturerer vi dig yderligere et fragtgebyr relateret til 2. levering og til aktuelle priser.

## 5. EJENDOMSFORBEHOLD

LB forbeholder sig, med de begrænsninger, der følger af ufravigelige retsregler, ejendomsretten til det solgte, indtil hele købesummen med tillæg af eventuelle renter og omkostninger er betalt.

## 6. RETTIGHEDER TIL DESIGN M.M.

Alle rettigheder til designs, varemærker, forretningskendetegn, form, mønstre, farvevalg og farvekompositioner m.v., der knytter sig til leverancen, forbliver hos LB. Enhver efterligning eller kopiering af produkter fra LB er i strid med dansk lovgivning om beskyttelse af brugskunst og mønstre m.m.

## 7. ANSVAR FOR MANGLER

7.1: LB bestræber sig til enhver tid på at sikre, at de leverede varer er i overensstemmelse med virksomhedens kvalitetsstandarder og specifikationer inden for grænsen af en tilladt størrelse tolerance på +/- 2-5% pr. vare. Såfremt der skulle kunne påvises mangler ved de leverede varer, påtager LB sig efter sit valg:

- at ombytte varen ved levering af en ny mangelfri vare til køberen,
- at udbedre varen,
- at kreditere køberen for den mangelfulde vare mod returnering af denne,
- at yde køberen et afslag i prisen for varen efter nærmere forudgående aftale.

7.2: De i pkt. 7.1 omhandlende forpligtel-

ser er betinget af, at der senest 8 dage efter modtagelse af den pågældende mangel er konstateret hos køberen, reklameres pr. e-mail med billeddokumentation over for LB med angivelse af, hvori fejlen / skaden måtte bestå.

1. Undersøg straks ved modtagelsen af varerne, om emballagen har lidt overlast, og om indholdet er intakt.

2. Ved transportskade bedes modtager notere på fragtbrevet, at godset er modtaget med forbehold. Reklameres per email inden 7 dage med billeddokumentation af defekte paller/pakker.

3. Bemærk! LB har ikke mulighed for at yde erstatning for transportskader, såfremt tidsfristen samt punkt 1 og 2 ikke er overholdt.

I overensstemmelse med Købeloven ophører LB's ansvar for mangelfulde leverancer under alle omstændigheder 2 år fra varernes overgivelse til køber.

7.3: Returnering af varer kan kun ske mod forudgående aftale med salgsafdelingen hos LB. Ved returnering skal varerne vedlægges kopi af returseddel rekvireret ved LB's salgsafdeling og pakken skal mærkes med retseddelnummeret. Køber betaler fragt ved returnering. LB forbeholder sig ret til, ved ekstraordinær eller ufyldstgørende reklamation, at kreditere reklamationen med - 20 % af den udfakturerede værdi.

7.4: LB er uden ansvar for indirekte skader og tab, følgeskader, tidstab, driftstab og avancetab eller lignende, der beror på mangler ved de leverede varer.

7.5: Køber har ingen returret på købte varer.

## 8. PRODUKTANSVAR

LB er ansvarlig efter lov om produktansvar i den udstrækning, hvor loven på ufravigelig måde pålægger LB ansvar for produktskader forvoldt af leverancer fra LB.

8.2: LB er i intet tilfælde ansvarlig for driftstab, tidstab, avancetab og lignende indirekte tab.

8.3: LB's ansvar for produktskader er i alle tilfælde begrænset til maksimum 10 millioner kroner.

## 9. VÆRNETING OG LOVVALG

Enhver tvist skal afgøres ved Sø- og Handelsretten i København efter dansk ret. Ved aftaler med parter hjemmehørende i udlandet kommer lov nr. 733 af 7. december 1988 om Den Internationale Købelov til anvendelse med de ændringer, der følger af nærværende almindelige salgs- og leveringsbetingelser.

# Salgs- og leveringsbetingelser

NORGE & SVERIGE. Gældende for samhandel med Lene Bjerre (LB) - medmindre andet er skriftligt aftalt.

## 1. GYLDIGHED

Disse almindelige salgs- og leveringsbetingelser er gældende for alle tilbud og leverancer fra LB (LB), medmindre anden skriftlig aftale herom foreligger parterne imellem. Der tages forbehold for trykfejl og prisændring.

## 2. TILBUD OG ACCEPT OG ORDREMODTAGELSE

Alle tilbud fra LB skal accepteres skriftligt inden 20 dage fra modtagelsen. Ved løbende samhandel uden fast pristilbud effektueres alle ordrer til de på ordremodtagelsesdagen gældende priser i danske kroner ekskl. moms og med forbehold for prisændringer i leverandørpriser, fragtpriser, toldsatser, forbrugsafgifter og valutakursudsving. Gældende priser fremgår af vedlagte prislister. Såfremt leveringstidspunktet ligger op til 8 uger efter ordremodtagelsen, tager LB dog forbehold for ændringer i prislister. Enhver ordre modtages med forbehold for at LB kan annullere ordren hvis LB har for lavt indvalg af pågældende design/dessin, svigt fra råvare-leverandør, design/dessin udgået/udsolgt, samt force majeure. LB kan afvise en ordre, såfremt der ikke kan opnås en tilfredsstillende kreditoplysning på kunden. Der sælges ikke produkter i anbrud. Du kan justere din ordre indenfor 48 timer efter modtagelsen af ordrebekræftelsen, men kun på de varer, som ikke er tilgængelige. Minimumskøb ved første leverance er NOK/SEK/SEK/SEK 10.000.

## 3. BETALING

3.1: LB har samarbejde med Midt Factoring A/S, som tager sig af det administrative arbejde i forbindelse med vores debitorbogholderi. Ordningen medfører, at fakturaer skal betales direkte til Midt Factoring. Alle Midt Factorings oplysninger vil fremgå på fakturaen.

3.2: Betalingen skal ske senest den dato, ordrebekræftelsen/fakturaen angiver som sidste rettidig betalingsdag.

3.3: Hvis betalingen sker efter forfaldsdato, er Midt Factoring berettiget til at beregne morarenter fra forfaldsdatoen i overensstemmelse med renteloven. Der vil yderligere blive tilskrevet rykkergebyr ved for sen betaling. Forsinkelse med forfaldne betalinger berettiger LB til at annullere eller udskyde igangværende ordrer.

## 4. LEVERING

Incoterms 2020 benyttes. Alle priser er ekskl. fragtomkost. LB er berettiget til at effektuere leverancer som delleverancer for købers regning. LB er uden ansvar for forsinkelser, der skyldes force majeure eller andre leveringshindrende omstændigheder, der rimeligvis ikke kunne forudses. I tilfælde af forsinkelse, der skyldes andre forhold end de førnævnte, hæfter LB dog ikke for indirekte skader og tab, følgeskader, driftstab, tidstab, avancetab og lignende indirekte tab. Fragtomkostninger til Norge beregnes som 13%

af fakturabeløbet, dog minimum NOK/SEK/SEK 750,00. Fragtomkostninger til Sverige beregnes som 11% af fakturabeløbet, dog minimum SEK 400,00. Levering er fragtfri ved ordrer på min. NOK/SEK/SEK/SEK 10.000,-. Levering af varer markeret med "special fragt" er undtaget i det fragtfrie beløb, derfor vil der blive afregnet Fragtomk. for disse varer.

Der vil på norske ordrer blive pålagt indfortoldninggebyr på hver faktura på NOK/SEK/SEK 250.

Hvis vi modtager en forkert leveringsadresse eller hvis der ikke er nogen til stede på leveringstidspunktet, fakturerer vi dig yderligere et fragtgebyr relateret til 2. levering og til aktuelle priser.

## 5. EJENDOMSFORBEHOLD

Ejendomsretten til det solgte forbliver LB's, indtil hele restfordringen er betalt, hvorfor køberen indtil da er uberettiget til at sælge, pantsætte, udlåne eller på anden lignende måde disponere over effekterne. Køberen er, indtil ejendomsretten overgår til ham, pligtig kun at benytte de solgte effekter på forsvarlig vis og sørge for at holde disse brand- og tyveriforsikret for egen regning. LB er berettiget til, når som helst, at tage effekterne i øjesyn. Køberen er over for LB ansvarlig for enhver beskadigelse af de købte effekter. Betales LB's tilgodehavende ikke rettidigt eller misligholder køber i øvrigt nogle af de i salgs- og leveringsbetingelserne nævnte vilkår, er LB berettiget til via fogedretten at tilbagetage de solgte effekter og forlange resttilgodehavendet betalt. Består misligholdelsen i en tilsidesættelse af betalingspligten, er LB berettiget til at tilbagetage de solgte effekter eller forlange sin restfordring indfriet, når køber er udeblevet med beløbet i 30 dage efter forfaldsdagen og dette beløb udgør mindst en tiendedel af det samlede beløb, der skal betales, eller hvis der i beløbet indgår flere afdrag, mindst en tyvendedel af det samlede beløb, der skal betales eller det udgør hele restfordringen.

## 6. RETTIGHEDER TIL DESIGN M.M.

Alle rettigheder til designs, varemærker, retningsskendetegn, form, mønstre, farvevalg og farvekompositioner m.v., der knytter sig til leverancen, forbliver hos LB. Enhver efterligning eller kopiering af produkter fra LB er i strid med dansk lovgivning om beskyttelse af brugskunst og mønstre m.m.

## 7. ANSVAR FOR MANGLER

7.1: LB bestreber sig til enhver tid på at sikre, at de leverede varer er i overensstemmelse med virksomhedens kvalitetsstandarder og specifikationer inden for grænsen af en tilladt størrelse tolerance på +/- 2-5% pr. vare. Såfremt der skulle kunne påvises mangler ved de leverede varer, påtager LB sig efter sit valg:

- at ombytte varen ved levering af en ny mangelfri vare til køberen,

- at udbedre varen,

- at kreditere køberen for den mangelfulde vare mod returnering af denne,

- at yde køberen et afslag i prisen for varen efter nærmere forudgående aftale.

7.2: De i pkt. 7.1 omhandlende forpligtelser er betinget af, at der senest 8 dage efter modtagelse af den pågældende mangel er konstateret hos køberen, reklameres pr. e-mail med billedokumentation over for LB med angivelse af, hvori fejlen / skaden måtte bestå.

1. Undersøg straks ved modtagelsen af varerne, om emballagen har lidt overlast, og om indholdet er intakt.

2. Ved transportskade bedes modtager notere på fragtbrevet, at godset er modtaget med forbehold. Reklameres per email inden 7 dage med billeddokumentation af defekte paller/pakker.

3. Bemærk! LB har ikke mulighed for at yde erstatning for transportskader, såfremt tidsfristen samt punkt 1 og 2 ikke er overholdt.

I overensstemmelse med Købeloven ophører LB's ansvar for mangelfulde leverancer under alle omstændigheder 2 år fra varernes overgivelse til køber.

7.3: Returnering af varer kan kun ske mod forudgående aftale med salgsafdelingen hos LB. Ved returnering skal varerne vedlægges kopi af returseddel rekvireret ved LB's salgsafdeling og pakken skal mærkes med returseddelnummeret. Køber betaler fragt ved returnering. LB forbeholder sig ret til, ved ekstraordinær eller ufyldstgørende reklamation, at kreditere reklamationen med - 20 % af den udfakturerede værdi.

7.4: LB er uden ansvar for indirekte skader og tab, følgeskader, tidstab, driftstab og avancetab eller lignende, der beror på mangler ved de leverede varer.

7.5: Køber har ingen returret på købte varer.

## 8. PRODUKTANSVAR

LB er ansvarlig efter lov om produktansvar i den udstrækning, hvor loven på ufravigelig måde pålægger LB ansvar for produktskader forvoldt af leverancer fra LB.

8.2: LB er i intet tilfælde ansvarlig for driftstab, tidstab, avancetab og lignende indirekte tab.

8.3: LB's ansvar for produktskader er i alle tilfælde begrænset til maksimum 10 millioner kroner.

## 9. VÆRNETING OG LOVALG

Enhver tvist skal afgøres ved Sø- og Handelsretten i København efter dansk ret. Ved aftaler med parter hjemmehørende i udlandet kommer lov nr. 733 af 7. december 1988 om Den Internationale Købelov til anvendelse med de ændringer, der følger af nærværende almindelige salgs- og leveringsbetingelser.

# Terms of sale and delivery

EXPORT. Valid for cooperation with Lene Bjerre (LB) - unless otherwise agreed in writing.

## 1. VALIDITY

These sales and delivery terms are valid for all offers, sales and deliveries between Lene Bjerre (LB) and the purchaser unless otherwise agreed in writing. Reservations are made regarding print errors and price changes.

## 2. ACCEPT OF OFFERS AND ORDERS

Orders from the purchaser pursuant to a prior offer from LB are binding upon the purchaser when received by LB and upon LB when accepted by a notice of confirmation to the purchaser. Any order accepted by LB shall be subject to force majeure, inadequate sales of the design ordered and sub-suppliers' failure to deliver materials for production. If the delivery time is up to 8 weeks after receiving the order confirmation, LB reserves the right to make changes to the price list. You cannot break colli. You can adjust the order within 48 hours after you have received the order confirmation, but only on products for late availability. LB is entitled to reject any order in case satisfactory credit information about the customer cannot be obtained.

Minimum order for new European Customers: EUR 1.000.00 – All other countries: please make query to our sales department.

## 3. TERMS OF DELIVERY

ICC's Incoterms 2020 is used for delivery terms – all prices are ex. freight cost. Preferred delivery terms are DDP, CIP, DAP or EXW. EXW orders will be added EXW fee of EUR 150,-. European orders at the value of EUR 1,000.00 are Carriage Paid. Freight costs will be calculated at Ireland 13% / Italy 14% / Finland 15% / Spain 16% / Portugal 18% / Benelux 11% / Baltic states 12% / Poland 13% / Czech Republic 13% / Slovenia 16% / Slovakia 15% / Northern Ireland 13% of the order amount, however min. EUR 30.00. Please note: Items marked with "Special freight" are not included in the minimum order size and will be added our forwarder's current freight charges. Delivery on an Island will be added our forwarder's current Island Fee. LB is entitled to execute orders as part delivery at the freight expense of the purchaser. If we have received a wrong delivery address or there is no one present at the time of delivery, we will invoice you for the charges related to the 2nd delivery at current rates. LB has no liability for delays attributable to circumstances construed as being force majeure situations, in which case the date of delivery shall be postponed for the duration of any circumstances preventing delivery. LB shall not be liable for any consequential damages or losses, indirect damages or losses, loss of business profits and the like. LB shall also be entitled,

at its option, to either postpone the delivery of an order or to cancel an order if the customer fails to make payments for the goods previously delivered. This does not entitle the customer to cancel present orders. If any visible damage to the shipment upon arrival, make sure to note this on the waybill before the driver leaves. For easier handling of the claim, please take photos of the damaged pallets/parcels at receipt and before unpacking and keep a copy of the freight letter. Damaged goods must be claimed by email towards LB within 8 days.

For countries not mentioned at the above terms, freight cost for delivery will be calculated and advised for customers confirmation before shipment of order.

## 4. PRICES

Any prices quoted shall be subject to changes in customs duties and excise taxes of any kind, and sudden exchange rate fluctuations. In case LB intends to invoke any such change, LB shall inform the customer thereof forthwith.

## 5. PAYMENT

5.1: LB have opted to transfer all administrative work relating to our customer accounts to Midt Factoring A/S. This arrangement will mean that any invoices are to be paid directly to Midt Factoring. All information related to Midt Factoring will appear on the invoice.

5.2: Payment must be made no later than the due date stated on the order confirmation / invoice.

5.3: Interest shall automatically be charged on overdue accounts at the rate of 2% per commenced period of a month from the due date. Midt Factoring is entitled to add reminder fee for late payments. Due to late payments LB has the rights to cancel or postpone current orders.

## 6. PROPERTY

The property of the goods delivered shall remain in LB until payment in full has been affected. Notwithstanding delivery and the passing of risk, property in and title to the goods shall remain with the seller until the seller has received payment of the full price of (a) all goods and/or services the subject of the Contract and (b) all other goods and/or services supplied by the seller to the buyer under any contract whatsoever. Payment of the full price shall include, without limitation, the amount of any interest or other sum payable under the terms of this and all other contracts between the seller and the buyer.

## 7. COPYRIGHTS

LB is the owner of all design rights and intellectual property rights to the products sold. These rights remain in LB irrespective of any sale of

products.

## 8. COMPLAINTS

8.1: LB endeavors at any time to secure, that the goods supplied are in accordance with the company qualification standards and specifications within the limit of an allowed tolerance of +/- 2 – 5 % on each article. If any part of the goods under proper use proves defective by reason of faulty or inadequate materials or workmanship within 12 calendar months of delivery, LB undertakes after own choice:

- to change the goods by delivering of a new article to the purchaser
- to repair the article
- to issue a credit note for the defective article against return of this
- to grant a price reduction after further agreement.

8.2: Complaints shall be made in writing within 8 days of receipt of the goods at the latest stating a precise description of nature of the error or defect. Complaints concerning part-deliveries shall not entitle the customers to cancel the remainder of the order.

8.3: Complaints shall be sent by email with photos showing the defect, and subject to acceptance by LB before any goods are returned. Copy of a Return Note received from LB must be included with the return goods and the carton(s) must be clearly marked with the Return Note Number and purchaser's name and address. Return shipments are at the cost of the purchaser.

8.4: LB shall not be liable for any consequential damages or losses, indirect damages or losses, loss of business profits and the like.

8.5: Return of bought goods are net accepted.

## 9. PRODUCT LIABILITY

9.1: LB is subject to the Danish legislation on products liability (based on the European Community's Products Liability Directive of 25 July 1985) and assumes no liability for personal injury or property damages in excess of that legislation.

9.2: LB shall not be liable for any consequential damages or losses, indirect damages or losses, loss of business profits and the like.

9.3: The products liability shall always be limited to the sums covered by the products liability insurance of LB.

## 10. VENUE AND LAW

Any dispute shall be settled by the Maritime and Commercial Court of Copenhagen (Sø- og Handelsretten) in accordance with Danish law.

# Terms of sale and delivery

GB. Valid for cooperation with Lene Bjerre (LB) - unless otherwise agreed in writing.

## 1. VALIDITY

These sales and delivery terms are valid for all offers, sales and deliveries between Lene Bjerre (LB) and the purchaser unless otherwise agreed in writing. Reservations are made regarding print errors and price changes.

## 2. ACCEPT OF OFFERS AND ORDERS

Orders from the purchaser pursuant to a prior offer from LB are binding upon the purchaser when received by LB and upon LB when accepted by a notice of confirmation to the purchaser. Any order accepted by LB shall be subject to force majeure, inadequate sales of the design ordered and sub suppliers' failure to deliver materials for production. If the delivery time is up to 8 weeks after receiving the order confirmation, LB reserves the right to make changes to the price list. You cannot break colli. You can adjust the order within 48 hours after you have received the order confirmation, but only on products for late availability. LB is entitled to reject any order in case satisfactory credit information about the customer cannot be obtained.

Minimum order for new customers: GBP 1.000.00

## 3. TERMS OF DELIVERY

ICC's Incoterms 2020 is used for delivery terms

– all prices are ex. freight cost. Preferred delivery terms are DDP and EXW.

EXW orders will be added EXW fee of GBP 150,-. Orders at the value of GBP 1,000.00 are Carriage Paid. Freight costs will be calculated at 13% of the order amount, however min. GBP 40.00. All UK Orders will be added a customs fee at GBP 40. Please note: Items marked with "Special freight" are not included in the minimum order size and will be added our forwarder's current freight charges. Delivery on an Island will be added our forwarder's current Island Fee. LB is entitled to execute orders as part delivery at the freight expense of the purchaser. If we have received a wrong delivery address or there is no one present at the time of delivery, we will invoice you for the charges related to the 2nd delivery at current rates. LB has no liability for delays attributable to circumstances construed as being force majeure situations, in which case the date of delivery shall be postponed for the duration of any circumstances preventing delivery. LB shall not be liable for any consequential damages or losses, indirect damages or losses, loss of business profits and the like. LB shall also be entitled, at its option, to either postpone the delivery of an order or to cancel an order if the customer fails to make payments for the goods previously delivered.

This does not entitle the customer to cancel present orders. If any visible damage to the shipment upon arrival, make sure to note this on the waybill before the driver leaves. For easier handling of the claim, please take photos of the damaged pallets/parcels at receipt and before unpacking and keep a copy of the freight letter. Damaged goods must be claimed by email towards LB within 8 days.

For countries not mentioned at the above terms, freight cost for delivery will be calculated and advised for customers confirmation before shipment of order.

## 4. PRICES

Any prices quoted shall be subject to changes in customs duties and excise taxes of any kind, and sudden exchange rate fluctuations. In case LB intends to invoke any such change, LB shall inform the customer thereof forthwith.

## 5. PAYMENT

5.1: LB have opted to transfer all administrative work relating to our customer accounts to Midt Factoring A/S. This arrangement will mean that any invoices are to be paid directly to Midt Factoring. All information related to Midt Factoring will appear on the invoice.

5.2: Payment must be made no later than the due date stated on the order confirmation / invoice.

5.3: Interest shall automatically be charged on overdue accounts at the rate of 2% per commenced period of a month from the due date. Midt Factoring is entitled to add reminder fee for late payments. Due to late payments LB has the rights to cancel or postpone current orders.

## 6. PROPERTY

The property of the goods delivered shall remain in LB until payment in full has been affected. Notwithstanding delivery and the passing of risk, property in and title to the goods shall remain with the seller until the seller has received payment of the full price of (a) all goods and/or services the subject of the Contract and (b) all other goods and/or services supplied by the seller to the buyer under any contract whatsoever. Payment of the full price shall include, without limitation, the amount of any interest or other sum payable under the terms of this and all other contracts between the seller and the buyer.

## 7. COPYRIGHTS

LB is the owner of all design rights and intellectual property rights to the products sold. These rights remain in LB irrespective of any sale of products.

## 8. COMPLAINTS

8.1: LB endeavors at any time to secure, that the goods supplied are in accordance with the company qualification standards and specifications within the limit of an allowed tolerance of +/- 2 – 5 % on each article. If any part of the goods under proper use proves defective by reason of faulty or inadequate materials or workmanship within 12 calendar months of delivery, LB undertakes after own choice:

- to change the goods by delivering of a new article to the purchaser
- to repair the article
- to issue a credit note for the defective article against return of this
- to grant a price reduction after further agreement.

8.2: Complaints shall be made in writing within 8 days of receipt of the goods at the latest stating a precise description of nature of the error or defect. Complaints concerning part-deliveries shall not entitle the customers to cancel the remainder of the order.

8.3: Complaints shall be sent by email with photos showing the defect, and subject to acceptance by LB before any goods are returned. Copy of a Return Note received from LB must be included with the return goods and the carton(s) must be clearly marked with the Return Note Number and purchasers name and address. Return shipments are at the cost of the purchaser.

8.4: LB shall not be liable for any consequential damages or losses, indirect damages or losses, loss of business profits and the like.

8.5: Return of bought goods are net accepted.

## 9. PRODUCT LIABILITY

9.1: LB is subject to the Danish legislation on products liability (based on the European Community's Products Liability Directive of 25 July 1985) and assumes no liability for personal injury or property damages in excess of that legislation.

9.2: LB shall not be liable for any consequential damages or losses, indirect damages or losses, loss of business profits and the like.

9.3: The products liability shall at all times be limited to the sums covered by the products liability insurance of LB.

## 10. VENUE AND LAW

Any dispute shall be settled by the Maritime and Commercial Court of Copenhagen (Sø- og Handelsretten) in accordance with Danish law.



# Allgemeine geschäftsbedingungen Deutschland/Österreich/Schweiz

## 1. GÜLTIGKEIT

Alle Aufträge werden von LB nur aufgrund der nachstehenden Bedingungen angenommen und ausgeführt. Entgegenstehende Bedingungen haben keine Gültigkeit. Durch das Erteilen von Aufträgen erkennt der Besteller diese Bedingungen an. Alle Angaben ohne Gewähr.

## 2. ANGEBOT UND AKZEPT

Alle Angebote von LB müssen binnen 20 Tagen nach Erhalt schriftlich akzeptiert werden. Bei regelmäßigem Geschäftsverkehr ohne Festpreisangebote, werden alle Aufträge zu den am Tag des Auftrageingangsgeltenden Preisen in dänischen Kronen ausschließlicherweise Mehrwertsteuer und unter Vorbehalt für Änderungen der Zolltarife, Abgaben und Schwankungen der Devisenkurse ausgeführt.

## 3. ZAHLUNG

Die erste Lieferung erfolgt gegen Vorkasse -3%. Lieferungen mit Bankeinzug werden mit 8 Tage -4% skontiert. Bei entsprechender Kreditsicherung ist die Zahlung binnen 30 Tage netto oder 10 Tage abzüglich 3% Skonto ab Ausstellungsdatum zu leisten. Bei Überschreitung des Zahlungszieles wird das Rechnungsguthaben mit einem Zinssatz von 4% über dem jeweiligen Diskontsatz der Bundesbank der Deutschen Bundesrepublik jährlich verzinst. Die Verzugszinsen werden jeden Monat berechnet. Das Überschreiten des Zahlungszieles erlaubt LB, laufende Aufträge zu annullieren oder zu verschieben. Kunden ohne UST-identifikationsnummer (EU-Identnummer) werden laut EU-Reglungen Mehrwertsteuer in der jeweils gültigen gesetzlichen Höhe in Rechnung gestellt. LB hat eine Zusammenarbeit mit Midt Factoring A/S. Diese Firma hat die Verwaltungsarbeit mit unserer Debitor-Buchhaltung übernommen.

Diese Änderung bedeutet, dass die Rechnungsbeträge direkt an Midt Factoring bezahlt werden müssen. Sie werden mit einer separaten Schreiben von Midt Factoring über die genauen Zahlungsbedingungen informiert.

## 4. LIEFERUNG

Incoterms 2020 werden verwendet. Alle Preise sind exkl. Frachtkosten. LB behält sich das Recht zur Teillieferung vor. Die Lieferfrist gilt vorbehaltlich unvorhergesehener Hindernisse, die außerhalb des Willens von LB liegen, insbesondere bei Betriebsstörung oder Fällen höherer Gewalt. Bei Überschreitung einer vereinbarten Lieferfrist aus anderen Ursachen als die oben erwähnten, haftet Lene Bjerre Design aber nicht für indirekte Schäden oder Verluste, Folgeschäden, Betriebsunterbrechungsverlust, Zeitverlust, Gewinneinbußen und ähnliche indirekte Verluste. Lieferung von Waren gekennzeichnet mit Spezialfracht ist nicht im Frachtfrei Lieferungen enthalten. Für diese Artikel werden wir die Frachtkosten separat berechnen.

## 5. FRACHT – DEUTSCHLAND/ ÖSTERREICH/SCHWEIZ

**Frachtkosten werden wie folgt berechnet:** Deutschland/ Österreich/Schweiz: Bestellungen mit einem Warenwert über EUR 1.000,00 sind

frei Haus. Für Lieferungen mit einem Warenwert unter 1.000,00 werden Frachtkosten in Höhe von Deutschland 11%, Österreich 12% und Schweiz 17%, vom Nettopreis berechnet. Das Mindestporto bei Kleinaufträgen unter EUR 250,00 Warenwert beträgt EUR 30,00. Waren mit dem Zeichen; „Spezial Fracht“ wird immer als Verkauf ab Fabrik betrachtet. Wenn es sichtbare Schäden auf der/den Karton(s) bei der Ankunft erscheinen, müssen Sie dies auf dem Frachtbrief anmerken, und den Fahrer bevor Abfahrt darauf aufmerksam machen. Wenn es unsichtbare Schäden an der Ware sind, müssen Sie LB innerhalb von 8 Tagen die Schäden melden.

1. Nach dem Erhalt der Ware bitte gründlich kontrollieren ob die Ware intakt sind und der Emballage unbeschädigt ist.

2. Bei Transportschaden bitte auf dem Frachtbrief notieren, das die Ware unter Vorbehalt empfangen sind. Für einen schnelleren Arbeitsgang bei Reklamationen, bitten wir Sie Fotos von den beschädigten Paletten/Kartons zu nehmen. Außerdem bitten wir Sie eine Anmerkung auf dem Frachtbrief zu notieren, bevor der Fahrer(in) Ihre Firma verlässt. Reklamierbare Ware müssen innerhalb 8 Tagen bei LB erhoben werden.

3. Bitte beachten! LB hat keine Möglichkeit, bei Transportschaden, die Ware zu ersetzen in so fern Punkt 1 und Punkt 2 nicht eingehalten worden sind.

## 6. AUFTRÄGE/MINDESTKAUF

Der Erstauftrag muss einen Warenwert von mindestens EUR 1.000,00 betragen.

## 7. EIGENTUMSVORBEHALT

Sämtliche von uns - auch künftig - gelieferten Waren bleiben bei uns bis zur vollständigen Bezahlung sämtlicher Forderungen aus der Geschäftsverbindung mit dem Käufer, das Eigentum von LB. Bei vertragswidrigem Verhalten des Käufers ist LB berechtigt, die Vorbehaltsware zurückzunehmen; der Käufer ist zur Herausgabe verpflichtet. In einer solchen Zurücknahme der Vorbehaltsware liegt kein Rücktritt von Vertrag, es sei denn, wir erklären dies schriftlich.

## 8. DESIGNRECHTE U.A.M.

Alle Rechte auf Design, Warenzeichen, Geschäftskennzeichen, Form, Muster, Farbwahl und Farbkombination u.a.m., die sich die Lieferung beziehen, verbleiben bei LB. Jede Nachmahnung oder Kopierung von LB Produkten ist gemäss der deutschen Gesetzgebung über Wohnaccessoires- und Markenschutz u.a.m. gesetzwidrig.

## 9. GEWÄHRLEISTUNG

9.1.: LB bemüht sich, zu jeder Zeit dafür zu sorgen, dass die Lieferungen in Übereinstimmung mit dem Qualitätsstandard und den Spezifikationen der Firma innerhalb erlaubten Toleranz von +/- 2 cm sind. Sollten gelieferte Waren mit Mängeln behaftet sein, verpflichtet sich LB nach eigener Wahl.:

- die Ware mit einer neuen fehlerfreien Lieferung an den Käufer umzutauschen
- die Ware auszubessern
- die fehlerhafte Ware zurückzunehmen und sie dem

Käufer gutzuschreiben Den Käufer gemäss vorhergehender Vereinbarung einen Preisnachlass auf die Ware zu gewähren. Vor Rücksendung muss ein Retourschein bei LB angefordert werden. Bitte beachten alle Reklamationen müssen vom Fotodokumentation deklariert werden mit genauer Angabe von den Fehler oder Schaden.

9.2.: Die unter Punkt 9.1. erwähnten Verpflichtungen setzen voraus, dass spätestens binnen 8 Tagen nachdem der betreffende Mangel vom Käufer festgestellt worden ist oder hätte festgestellt werden müssen, schriftlich mit Angabe der Mangelart an LB gemeldet wird. In Übereinstimmung mit dem Handelsgesetz erlischt die Haftung für fehlerhafte Lieferungen von LB 2 Jahre nach der Übergabe der Waren an den Käufer.

9.3: Retouren von Waren können nur nach Vereinbarung mit LB und nach Empfang des Retourscheins stattfinden Der Retourschein soll mit den Retourwaren zusammengepackt werden Der Retourkarton soll mit Retourscheinnummer gekennzeichnet werden. Der Käufer zahlt die Retourfracht. LB behält sich das Recht vor, außergewöhnliche oder unvollständige Reklamationen mit 20% des berechneten Warenwertes gutzuschreiben.

9.4: LB übernimmt keine Gewähr für indirekte Schäden und Verluste, Folgeschäden, Zeitverluste, Betriebsunterbrechungsverluste und Gewinneinbußen oder ähnliches, die aus Mängeln an den gelieferten Waren entstehen.

## 10. PRODUKTHAFTUNG

10.1: Schadenersatzansprüche des Bestellers sind, soweit rechtlich zulässig, ausgeschlossen. Der Anschluss gilt nicht für die Haftung LB für sich und ihre Erfüllungsgehilfen, soweit diese aus dem Produkthaftungsgesetz oder auf grober Fahrlässigkeit oder Vorsatz bemüht. Bei einer Haftung nach dem Produkthaftungsgesetz ist der Besteller verpflichtet, zur Abwendung und/oder Vermeidung von Schäden alle erforderlichen Massnahmen zu ergreifen und LB unverzüglich über alle wesentlichen Umstände in Kenntnis zu setzen. Er ist ferner verpflichtet, LB mit allen Informationen zu versorgen, die unter allen in Betracht kommenden Gesichtspunkten die für LB erforderlich sind, um Produkthaftungspflichtenansprüchen zu begegnen. Sollte der Besteller diese Pflicht schuldhaft verletzen, ist er LB gegenüber regresspflichtig.

10.2: Die Haftung für Produktschaden der Firma LB ist in allen Fällen auf höchstens 10 Millionen Dänische Kronen begrenzt.

## 11. GERICHTSSTAND UND ANWENDBARES RECHT

Alle Streitigkeiten sind gemäss dänischem Recht vor dem See- und Handelsgericht (Sø og Handelsretten) in Kopenhagen zu entscheiden. Für Verträge mit Parteien im Ausland tritt das Gesetz Nr. 733 vom 7. Dezember 1998 des Internationalen Handelsgesetz in Kraft, doch mit den Änderungen, die sich aus den vorliegenden allgemeinen Geschäftsbedingungen ergeben.

# Conditions générales de vente et de livraison

France. Valides pour la coopération avec Lene Bjerre (LB)

- sauf accord particulier donné par écrit.

## 1. DISPOSITIONS GÉNÉRALES

Les ventes et conditions de livraison sont valables pour toutes commandes, ventes et livraisons entre LB (LB) et l'acheteur sauf accord différent donné par écrit. Sous réserve des fautes d'impression et changements des prix.

## 2. CONFIRMATION D'OFFRES ET COMMANDES

Toute offre ou toute commande doit être transmise à LB au moyen du bon de commande LB et suppose l'acceptation des présentes conditions générales de vente et de livraison pour la France. Tout envoi d'une offre d'achat ou commande lie l'acheteur. LB est uniquement engagé par l'envoi d'une confirmation de commande à l'acheteur. Toute commande reçue par LB sera subordonnée au cas de force majeure, aux ventes insuffisantes du produit en question et au manquement des fournisseurs de fournir les matériaux pour produire. Le client acheteur est autorisé à annuler sa commande dans les 8 jours suivant son envoi. LB est autorisée à rejeter n'importe quelle commande pour laquelle des informations satisfaisantes du degré de solvabilité sur le client ne peuvent pas être obtenues. Minimum de commande pour une première livraison est EUR 1.000,-.

## 3. LIVRAISONS

Toutes les marchandises sont livrées selon l'ICC's Incoterms 2020 à moins qu'autrement expressément convenu par écrit. Tout prix est excl. les frais de port. Pour les commandes livrables en France (sauf pour la Corse) supérieures à EUR 1.000,-, la livraison est franco. Pour toutes autres livraisons, les frais de transport sont calculés à raison de 13 % du montant total de la commande, minimum EUR 30,00,-. NB. Pour la livraison de mobilier magasin et de meubles ou articles marqués de "Frais compl. envoi" dans notre catalogue, les frais de transport pour la livraison de ceux-ci sont calculés individuellement et seront toujours à la charge de l'acheteur. Shop matériel: la livraison de shop matériel sera toujours à la charge de l'acheteur. LB est autorisé à exécuter des livraisons partielles les frais de transport étant à la charge de l'acheteur. En cas de retard causé par force majeure, LB ne sera pas responsable et la date de la livraison sera retardée jusqu'à ce que les circonstances permettent la livraison. LB ne sera pas responsable des dommages directs ou indirects, perte de bénéfices et autres résultant d'un tel retard. LB aura également droit, selon son choix, de remettre la livraison d'une commande ou annuler une commande si le client n'est pas à jour de ses paiements pour les marchandises précédemment livrées. Ceci ne donne pas le droit au client d'annuler les commandes en cours. En cas de dommage visible à la livraison, ceci doit être annoté sur le bon de livraison avant le départ du chauffeur livreur.

## 4. PRIX

Tous les prix indiqués sont sujets à des changements de droits de douane, d'impôts prélevés par la régie et fluctuations soudaines de taux de change. En cas de change de prix, le client sera immédiatement informé par LB.

## 5. CONDITIONS DE PAIEMENT

Le paiement doit être effectué au plus tard à la date d'échéance indiquée sur la confirmation de commande / la facture. À moins qu'autrement convenu par écrit, les conditions de paiement des factures à LB sont de 30 jours à compter de la date de la facture, sous réserve qu'une assurance-crédit soit obtenue. Un intérêt de 2% par mois sera automatiquement appliqué en cas de retard de paiement. Au cas où le paiement serait effectué après que LB ait été amené à exposer des frais pour récupérer le paiement, ces frais seront supportés en totalité par l'acheteur. Le paiement à LB par virement bancaire est aux frais de l'acheteur.

De part ce mandat de facturation, nos factures émises par Midt Factoring A/S doivent être payées à ce dernier. Par conséquent, Midt Factoring A/S transférera les instructions de paiement directement à l'acheteur.

## 6. RESERVE DE PROPRIÉTÉ

LB conserve la propriété des biens vendus jusqu'au paiement effectif de l'intégralité du prix en principal et accessoires. Ne constitue pas un paiement au sens de cette Clause la remise d'un titre créant une obligation de payer (traite ou autre). Le défaut de paiement de l'une quelconque des échéances pourra entraîner la revendication des biens. L'acheteur supportera, dès la livraison, les risques de perte et de détérioration des biens vendus ainsi que les dommages qu'ils pourraient occasionner.

## 7. COPYRIGHTS

LB est le propriétaire de tous les droits de design et droits intellectuels des produits vendus. Ces droits seront réservés pour n'importe quelle vente de produits.

## 8. PLAINTES RECLAMATIONS

8.1: LB essaye à tout moment de garantir que les marchandises fournies sont conformes aux normes de la société et en concordance avec les spécifications avec une tolérance de +/- 2 - 5 centimètres sur chaque article. Si une marchandise qui a été normalement utilisée, est défectueuse dans un délai de 12 mois civils suivants la livraison, LB aura les choix suivants:

- remplacer la marchandise par une nouvelle pièce.
- réparer l'article.
- envoyer un avoir contre le retour de l'article défectueux.
- accorder une réduction de prix après accord avec LB.

8.2: Les réclamations devront être transmises par email avec photo dans les 8 jours de la réception des marchandises en donnant une description précise de la nature de l'erreur ou du défaut. Les réclamations au sujet de livraisons non complètes n'autoriseront pas le client à annuler le reste de la commande.

8.2.1: Vérifier dès réception de la marchandise, si l'emballage et le contenu est intact.

8.2.2: Si endommagé suite au transport, cela doit être noté sur le reçu, que la marchandise a été accepté avec réservations. Pour faciliter le traitement de la réclamation, merci de prendre des photos des palettes/cartons défectueux avant de les déballer et les joindre à la réclamation par mail dans les 8 jours de la réception de la marchandise. NB! LB ne peut pas effectuer de remboursement suite à des endommagements de transport, si le délai et les points 8.2.1 et 8.2.2 mentionnés ci-dessus ne sont pas respectés.

8.3: Toute réclamation doit être envoyée par e-mail avec photos montrant clairement les articles défectueux.

8.4: Les réclamations doivent être approuvées par LB avant que les marchandises soient éventuellement retournées. Les frais de retour sont à la charge de LB. La marchandise en retour doit être clairement identifiée et inclure une copie de la lettre de retour émanant de LB et le numéro de retour doit être clairement indiqué sur le paquet.

8.5: LB ne sera pas responsable des dommages ou pertes consécutives, dommages indirects ou pertes, perte d'affaires bénéfiques et semblable.

8.6: Le client n'a pas le droit de retour sur les articles achetés.

## 9. RESPONSABILITÉ DU FAIT DES PRODUITS

9.1: LB est sujet à la législation danoise sur la responsabilité des faits des produits (basée sur la directive de responsabilité du fait des produits de la communauté européenne de 25 juillet 1985) et n'assume aucune responsabilité pour les blessures ou des dégâts matériels au-delà de cette législation.

9.2: LB ne sera pas responsable des dommages consécutifs ou pertes, dommages ou pertes indirectes, perte de bénéfices et semblables.

9.3: La responsabilité du fait des produits sera à tout moment limitée aux sommes couvertes par l'assurance de responsabilité des produits de la société LB.

## 10. DROIT APPLICABLE ET COMPÉTENCE JUDICIAIRE

Tous les différends seront tranchés suivant la législation et règles danoises.



# Christmas

